



Meetings and Events

at the Radisson Edwardian Vanderbilt Hotel

Our experience creates a better experience

Radisson
EDWARDIAN
VANDERBILT



Meetings and events should always be this easy

- Flexible spaces
- Dedicated consultants
- Complimentary wi-fi
- Food that's fast, fresh and healthy
- Sensible pricing without the hidden extras
- All-inclusive small meeting packages
- Loyalty rewarded with Points for Planners
radissonedwardian.com/pointsforplanners

Meet Well

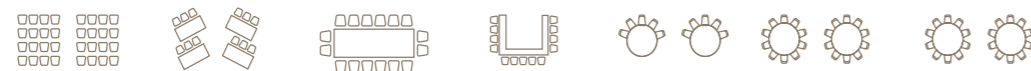
Meeting well means treating well the things that really matter. More than just reducing your meeting's environmental impact, it's also a commitment to positively affecting the communities we are a part of. Our approach to responsible business means a clearer conscience for you – whatever the size and style of your event.

Visit radissonedwardian.com/meetwell



With a prime Kensington location, close to Knightsbridge and convenient for Heathrow, the Vanderbilt's classic English ambience is perfect for both meetings and private dining. Warm wood panelling and a beautifully restored fresco on arrival makes for an inspiring environment, while advanced technology makes everything easy.

Capacities



	Theatre	Classroom	Boardroom	U-shape	Cabaret	Reception	Lunch/Dinner
Cleo's	60	30	34	24	32	120	60
Victoria & Albert	110	50	40	40	54	140	80
Cromwell	40	20	24	20	24	50	30
Kensington	–	–	8	–	–	–	–
Gloucester	–	–	8	–	–	–	–
Vanderbilt	–	–	12	–	–	–	12
Edwardian	44	27	20	16	24	60	40
Alexandra	25	15	16	12	14	30	20
Brompton	25	15	16	12	14	30	20
Harrington	25	15	16	12	14	30	20
Stanhope	12	12	10	8	–	20	10
Cornwall	–	–	10	–	–	–	10
Ashburn	–	–	10	–	–	–	–

Floor Dimensions

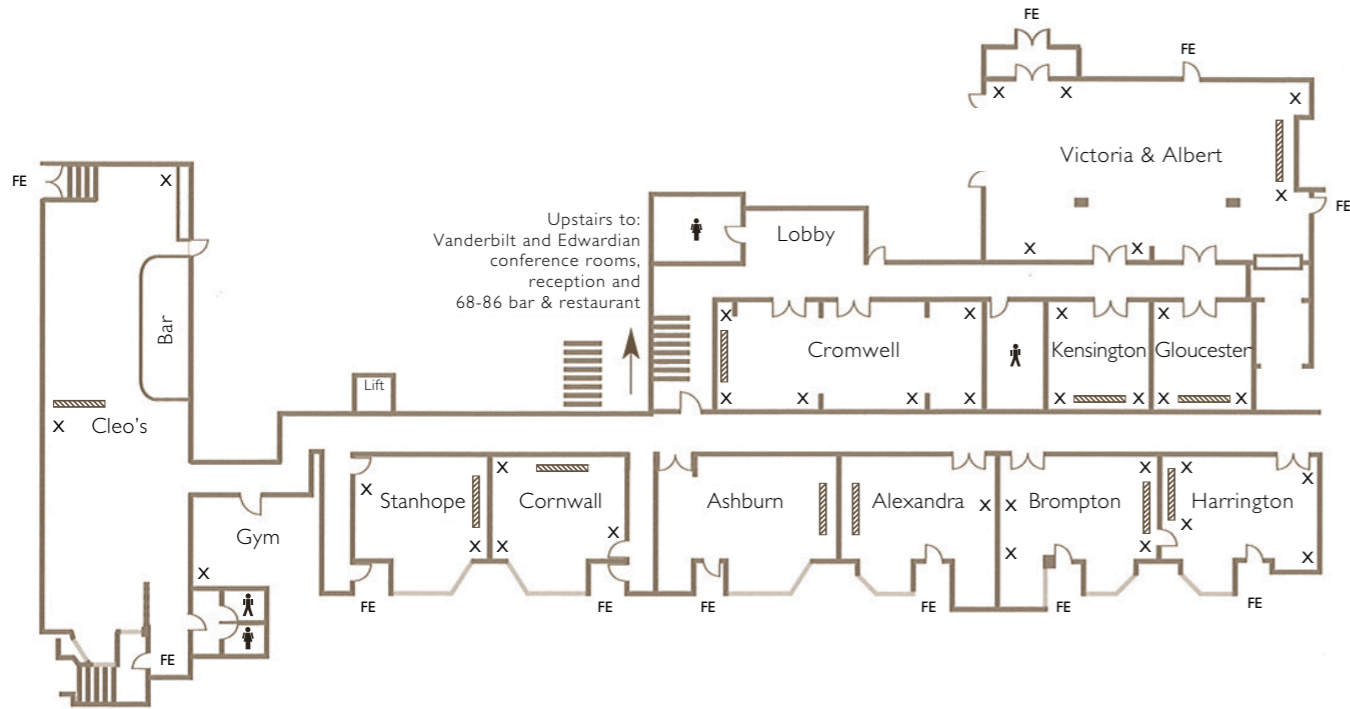
	Area	Length m (ft)	Width m (ft)	Height m (ft)
Cleo's	75 m ² (807 ft ²)	21m (226')	6.7m (72')	2.6m (28')
Victoria & Albert	96.6 m ² (1039 ft ²)	14m (151')	6.9m (74')	2.4m (26')
Cromwell	51.5 m ² (553 ft ²)	11.7m (126')	4.4m (47')	2.4m (26')
Kensington	19.4 m ² (208 ft ²)	4.4m (47')	4.4m (47')	2.4m (26')
Gloucester	18 m ² (194 ft ²)	4.1m (44')	4.4m (47')	2.4m (26')
Vanderbilt	37.8 m ² (406 ft ²)	5.9m (63')	6.4m (69')	3.9m (42')
Edwardian	51.1 m ² (549 ft ²)	7m (75')	7.3m (79')	3.9m (42')
Alexandra	30.6 m ² (329 ft ²)	6.8m (73')	4.5m (48')	2.2m (24')
Brompton	30.6 m ² (329 ft ²)	6.8m (73')	4.5m (48')	2.2m (24')
Harrington	30.6 m ² (329 ft ²)	6.8m (73')	4.5m (48')	2.2m (24')
Stanhope	21.6 m ² (232 ft ²)	4.8m (52')	4.5m (48')	2.4m (26')
Cornwall	21.2 m ² (227 ft ²)	4.7m (51')	4.5m (48')	2.4m (26')
Ashburn	30.2 m ² (324ft ²)	6.7m (72')	4.5m (48')	2.4m (26')



Lower Ground Floor

All meeting rooms are fully air conditioned and benefit from:

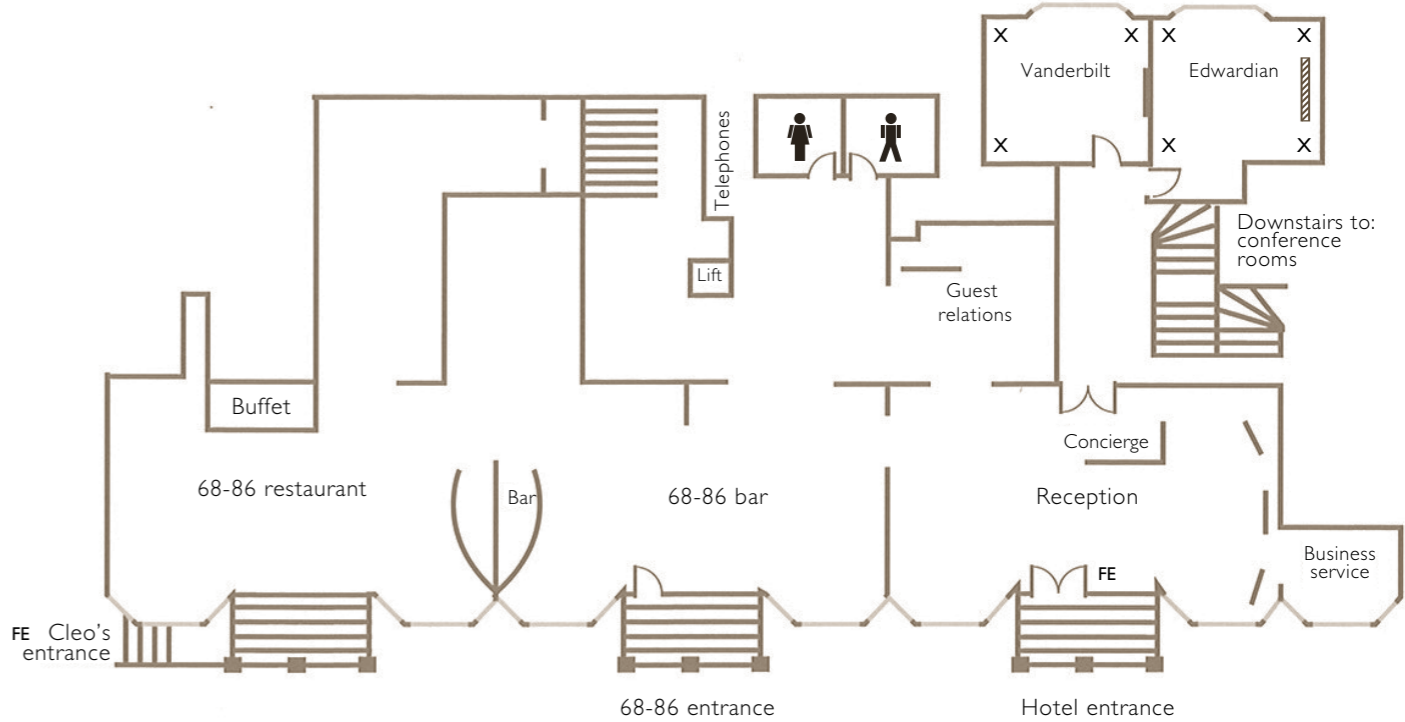
- Complimentary wireless
- Broadband access
- CD, DVD, VHS
- LCD projector and screen or plasma
- MP3 and PC connectivity



Key

- FE = Fire exit
- ▨ = Screen
- X = 13 amp socket

Ground Floor



Find us



Radisson Edwardian Vanderbilt Hotel ★★★★★ 68-86 Cromwell Road, London SW7 5BT
t: +44 (0)20 7761 9013 f: +44 (0)20 7761 9045 e: vandcb@radisson.com
radissonedwardian.com/vanderbilt