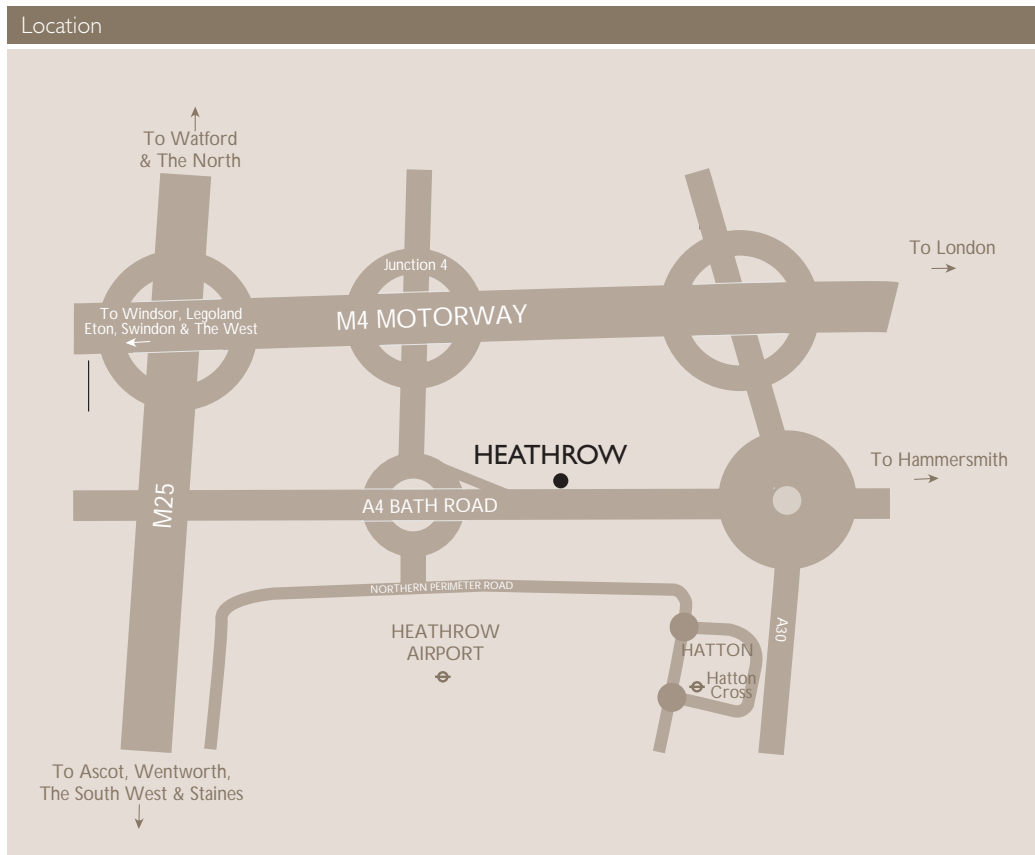




radisson edwardian heathrow planning guide



Contact information

Radisson Edwardian Hotel at Heathrow ★★★★★
 140 Bath Road, Hayes,
 Middlesex UB3 5AW
 Telephone: +44 (0)20 8759 6311
 Facsimile: +44 (0)20 8759 4559
 Email: resreh@radisson.com

Conference & private dining:
 Telephone: +44 (0)20 8757 7903
 Facsimile: +44 (0)20 8757 7904
 Email: htrwcb@radisson.com
 www.radissonedwardian.com

This is a working document that gives you all the practical details, plans and space to make notes as you plan for your event. It is also makes it easy to discuss your event accurately over the telephone. We hope you find it valuable.

Accommodation
 459 bedrooms:
 17 Suites; 146 Kings; 194 Doubles;
 15 Triples; 84 Twins; 3 Singles,
 4 lifts accessing all floors

Facilities
 Air conditioning
 Express check out
 In room safe
 Mini bar
 Mobile phone on request
 Modem connection
 Personal phone number with voice mail
 Satellite and pay movies, flight information
 Trouser press

Hotel services
 Business centre. Pegasus health spa.
 Newsagent; jewellers; flight information screens;
 disabled toilets.
 Concierge - can arrange sightseeing tours; theatre
 and concert tickets; flowers; car hire.
 Valet service available for laundry.

Dining
 Henleys restaurant & bar
 The Brasserie
 Drawing Room
 Polo Lounge

Conference and private dining
 Maximum capacity: 700

Hotel car park
 550 spaces available

Getting here
 By road
 From Junction 4 off of the M4, follow signs to
 Terminals 1, 2 & 3.
 At roundabout take A4 exit onto Bath Road.
 Continue for about 1/2 km, the hotel entrance
 is 2nd on the left.

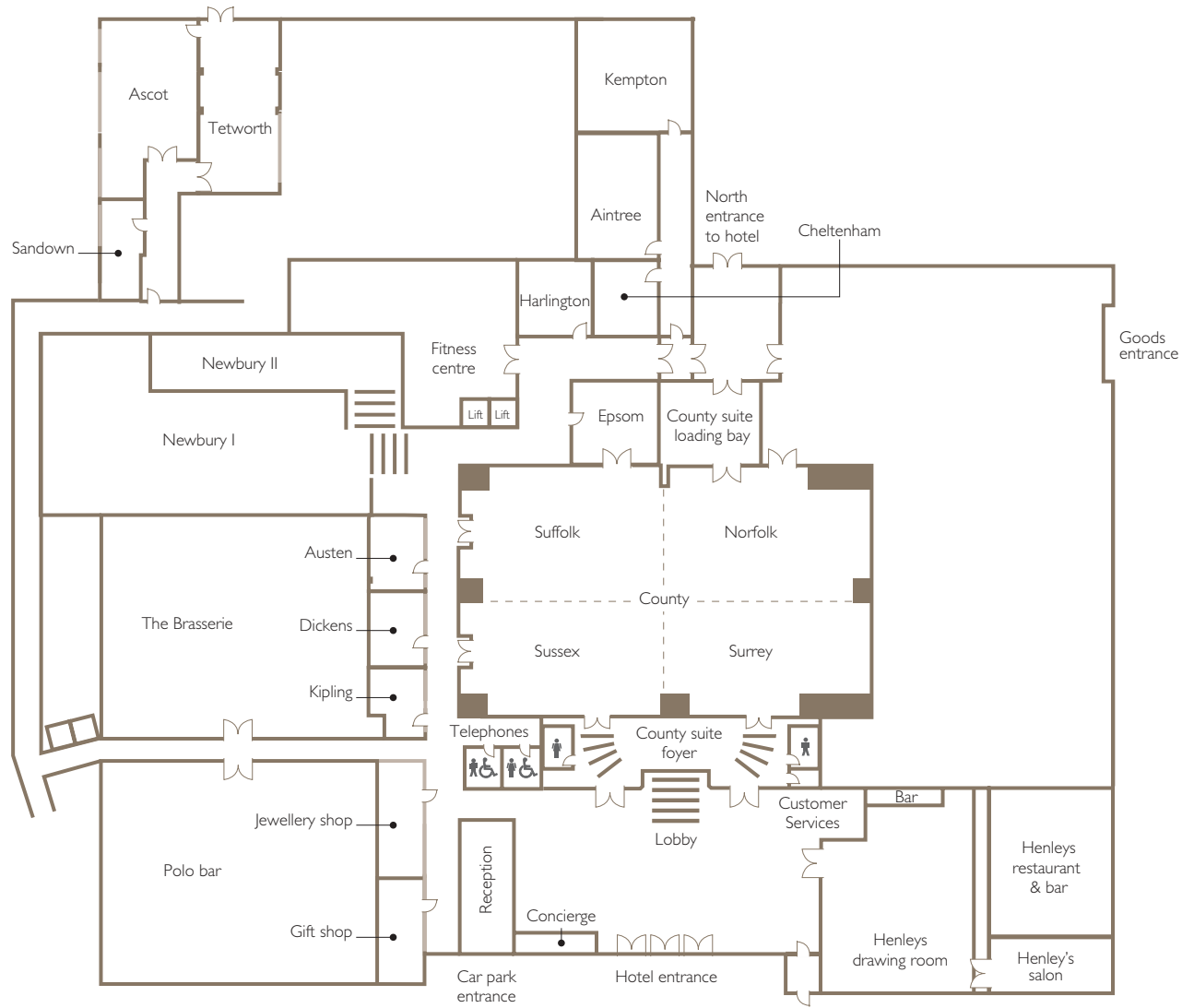
From central London to Heathrow airport:
 By Underground
 Piccadilly Line from central London. 40-45 mins

By Heathrow Express
 From Paddington to Terminals 1, 2 & 3
 Every 15 minutes 05.02-23.47 daily

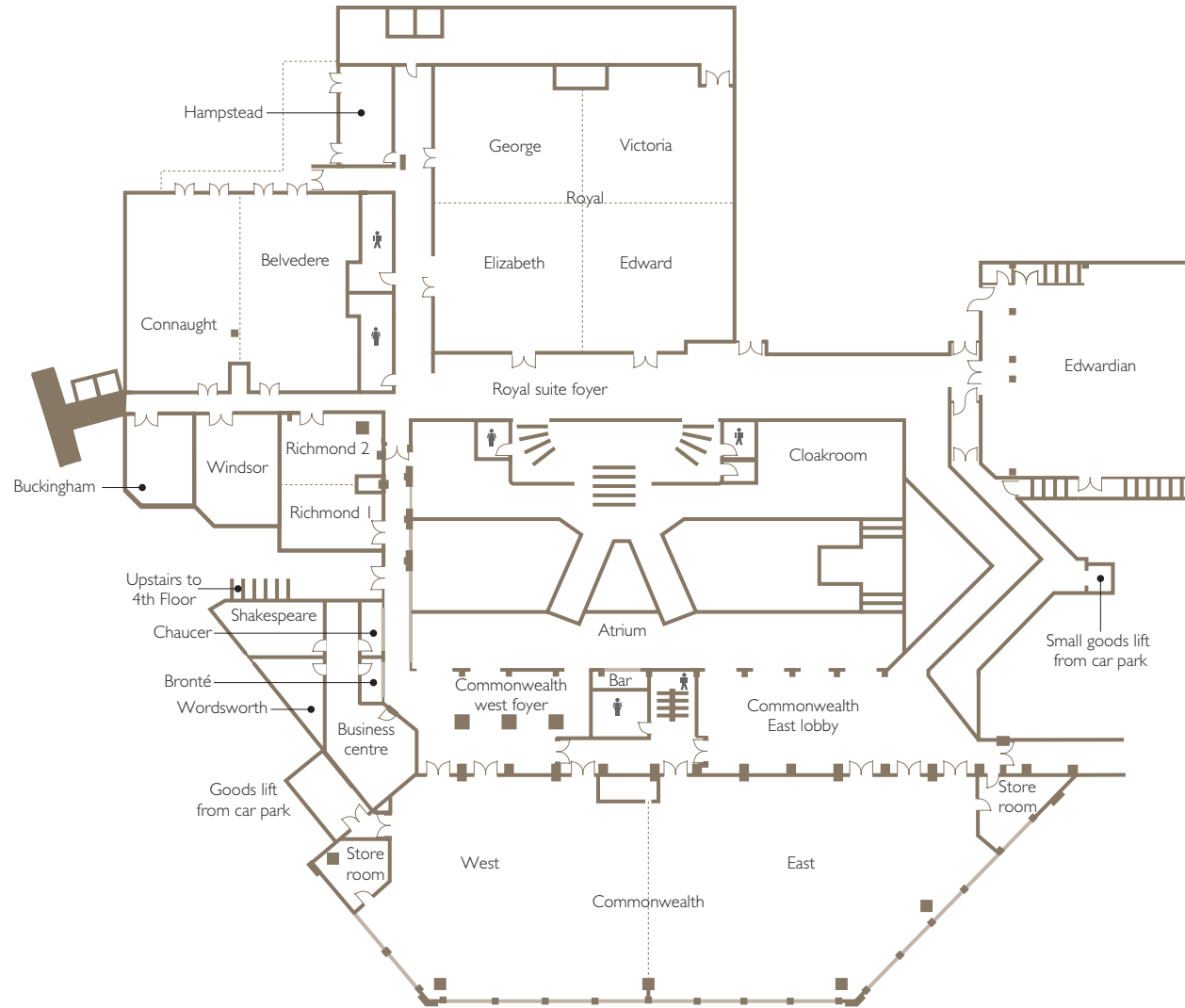
From Heathrow airport to hotel
 • From Terminal 4 – Take a taxi. 8 mins
 • From Terminals 1, 2 & 3. 5 mins
 Use the Heathrow Hotel Hoppa coach running
 frequently between the airport and the hotel
 from 05.10-23.52 daily

For places of interest please refer to map.

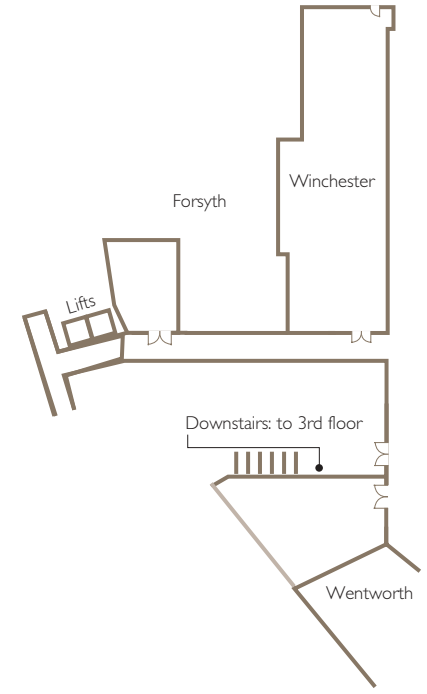
Ground Floor



Third Floor

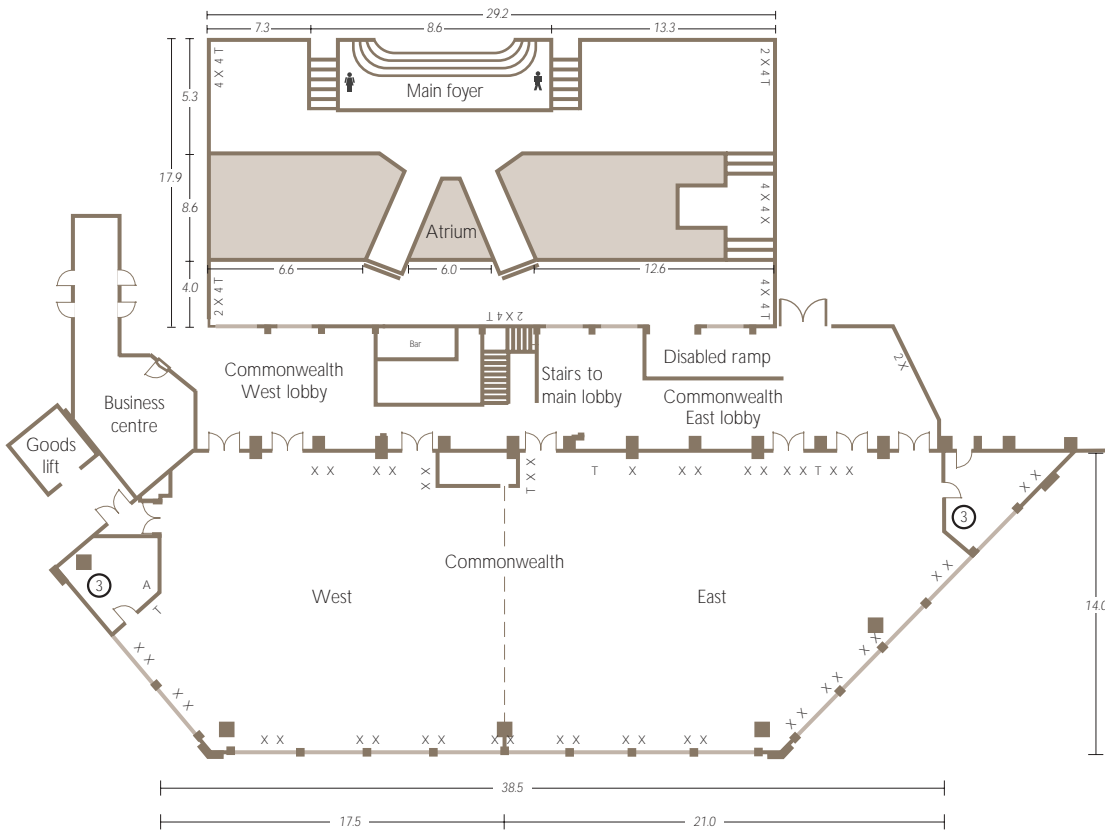


Fourth Floor

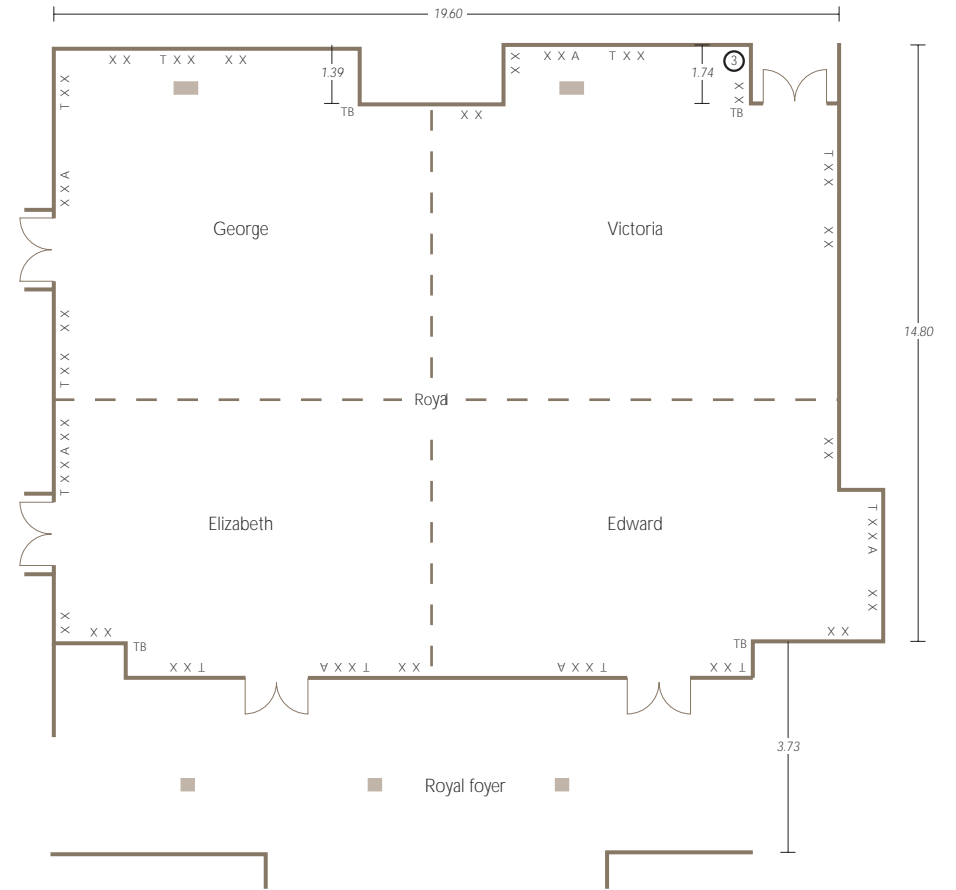


Key	
T	Telephone
X	13 amp socket
A	TV aerial
■	Pillar
—	Windows
	Screen
Ⓢ	3 phase - 63A

Commonwealth. Third Floor



Royal. Third Floor

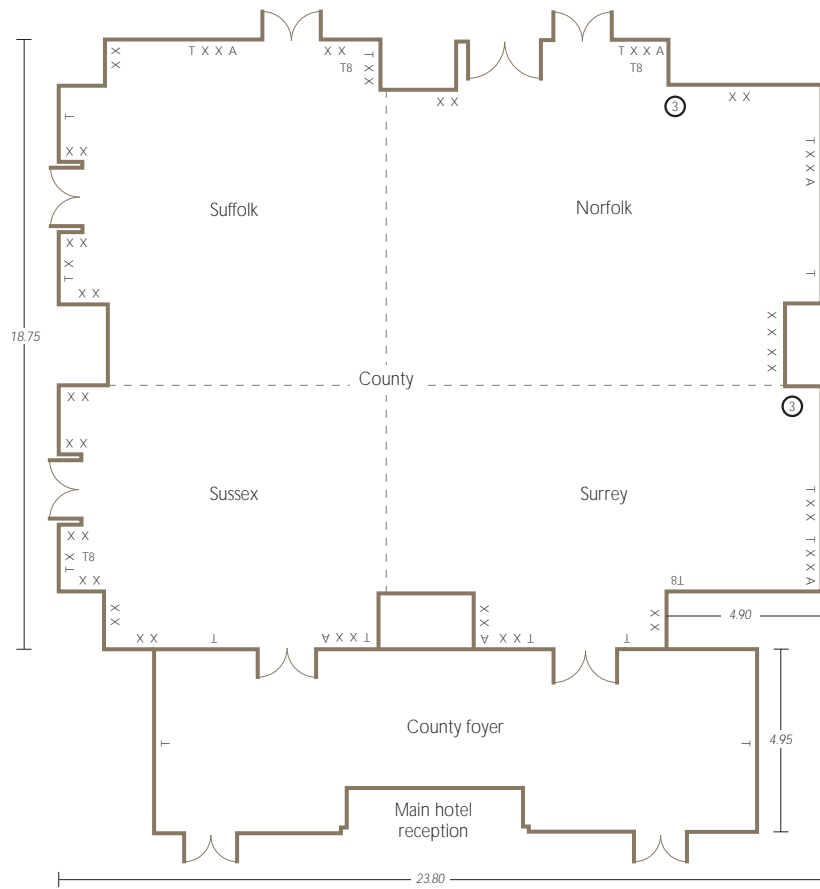




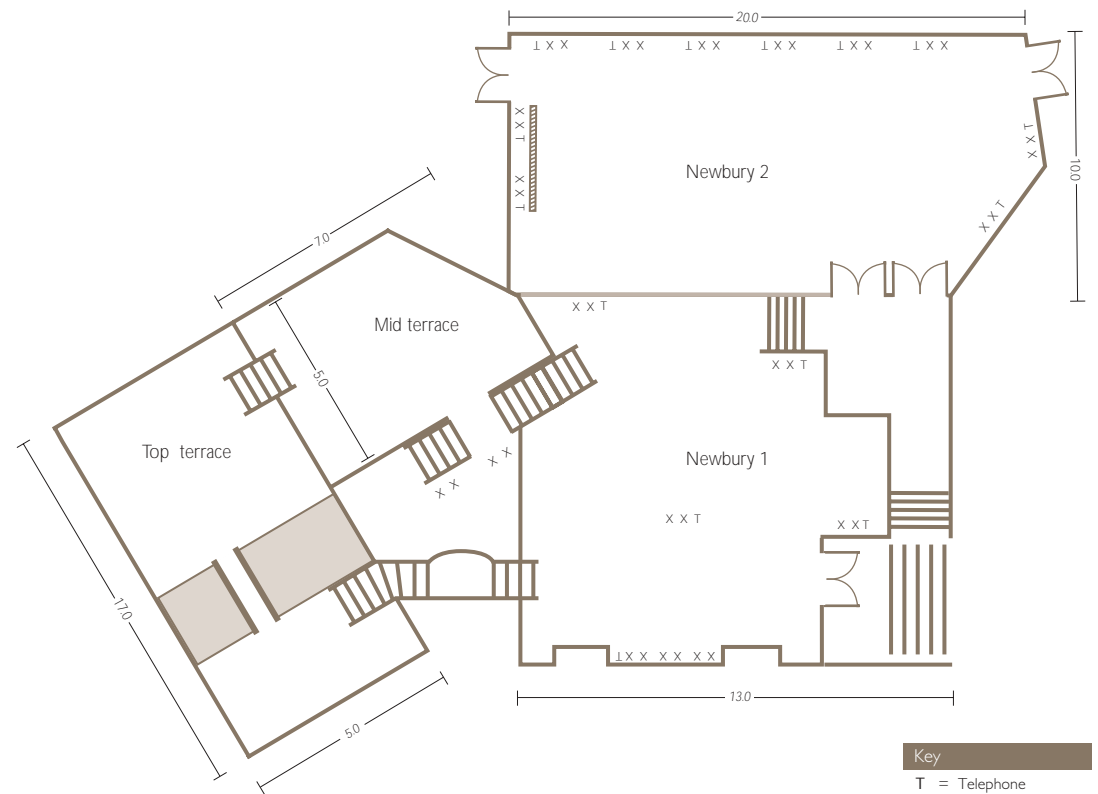




County. Ground Floor

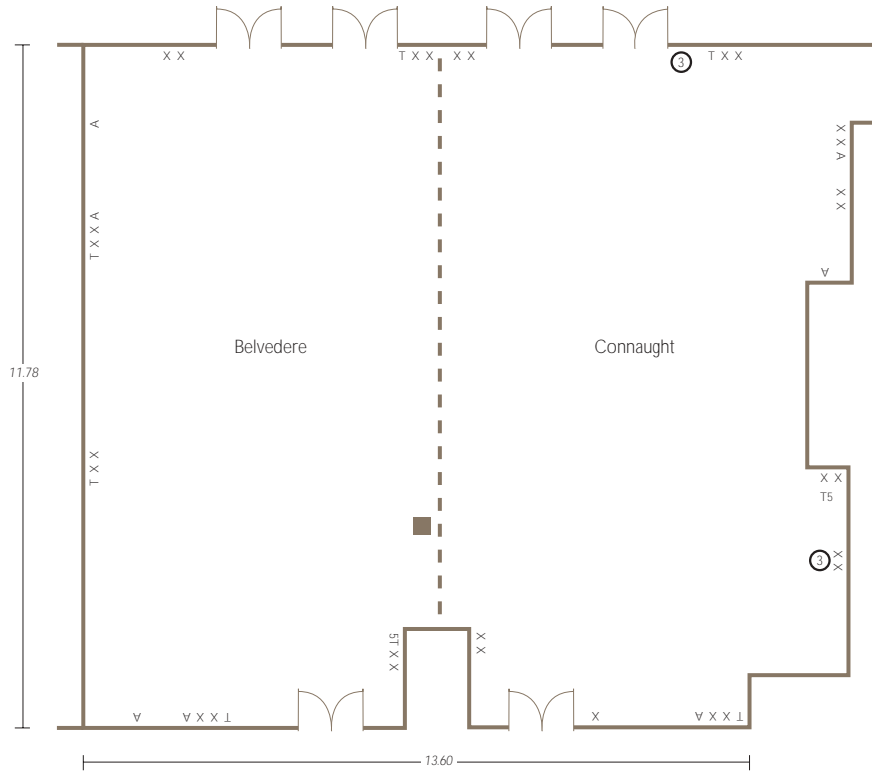


Newbury. Ground Floor

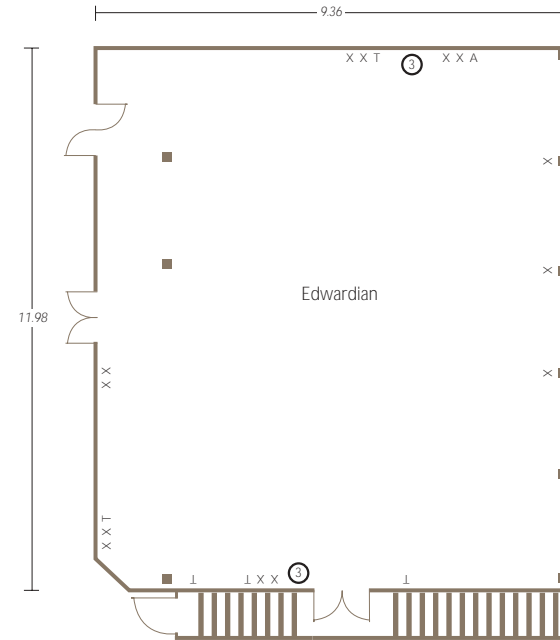


Key	
T	Telephone
X	13 amp socket
A	TV aerial
■	Pillar
▬	Windows
	Screen
③	3 phase - 63A

Connaught. Belvedere. Third Floor

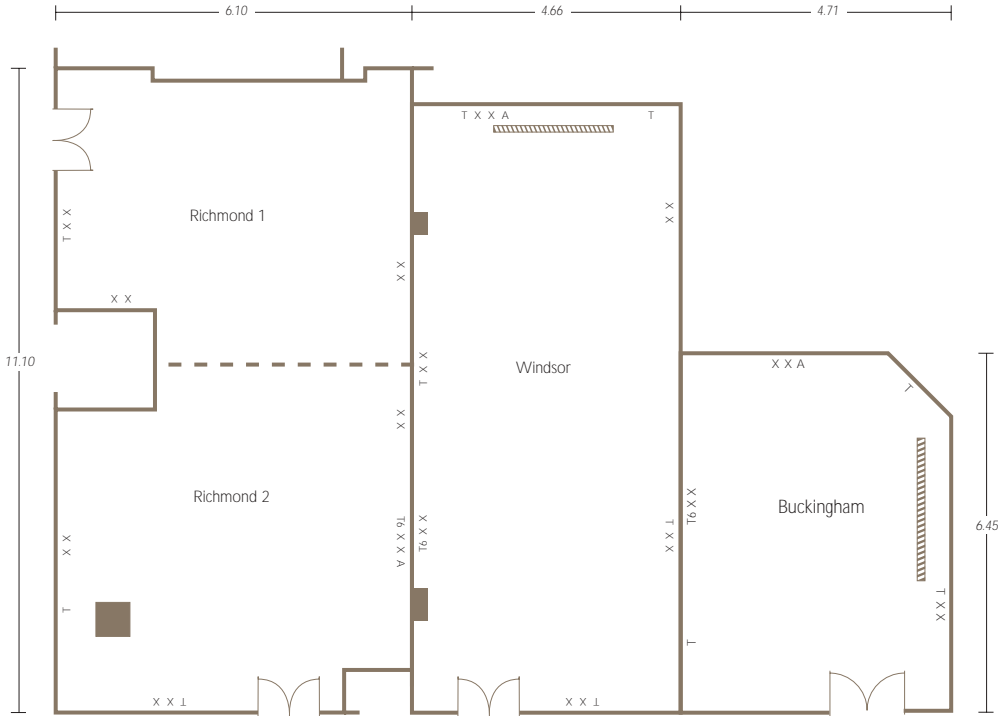


Edwardian. Third Floor

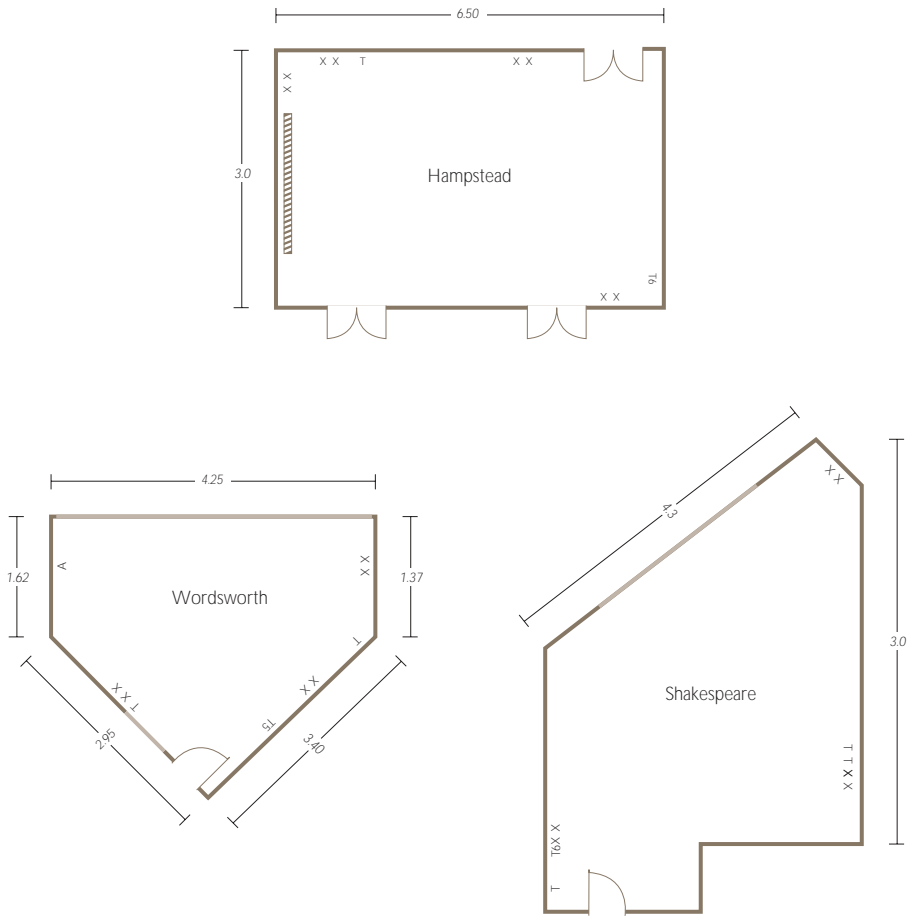


Key	
T	Telephone
X	13 amp socket
A	TV aerial
■	Pillar
—	Windows
- - -	Screen
Ⓜ	3 phase - 63A

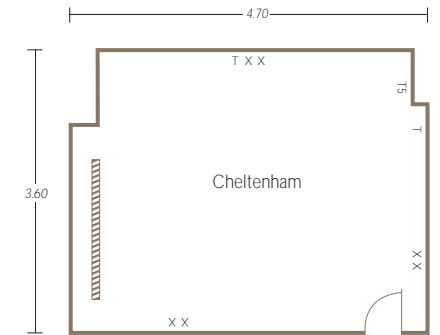
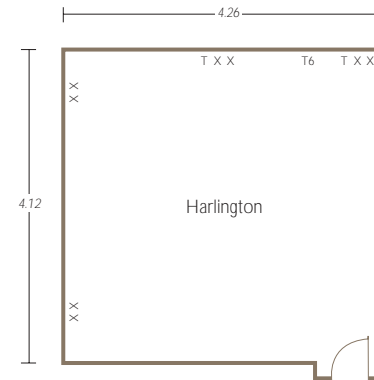
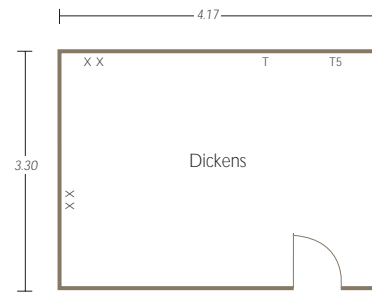
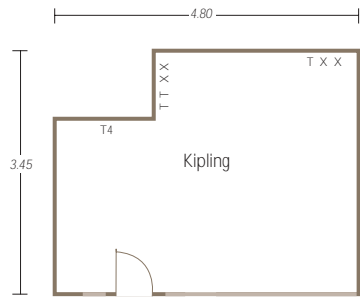
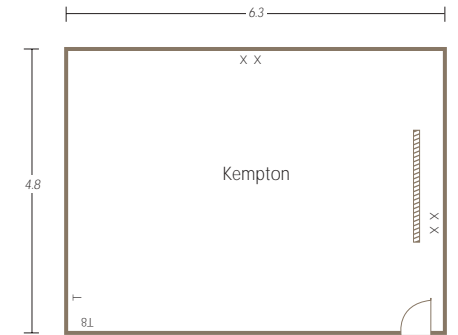
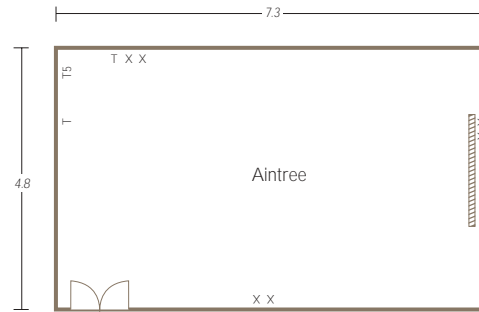
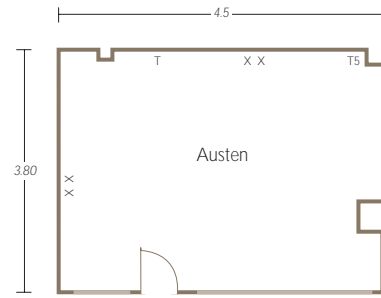
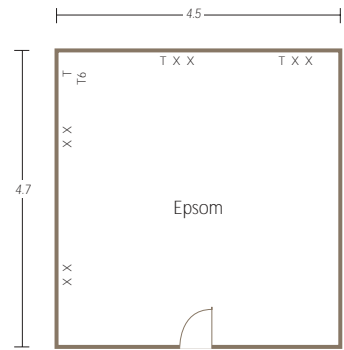
Richmond. Buckingham. Windsor. Third Floor



Hampstead. Wordsworth. Shakespeare. Third Floor



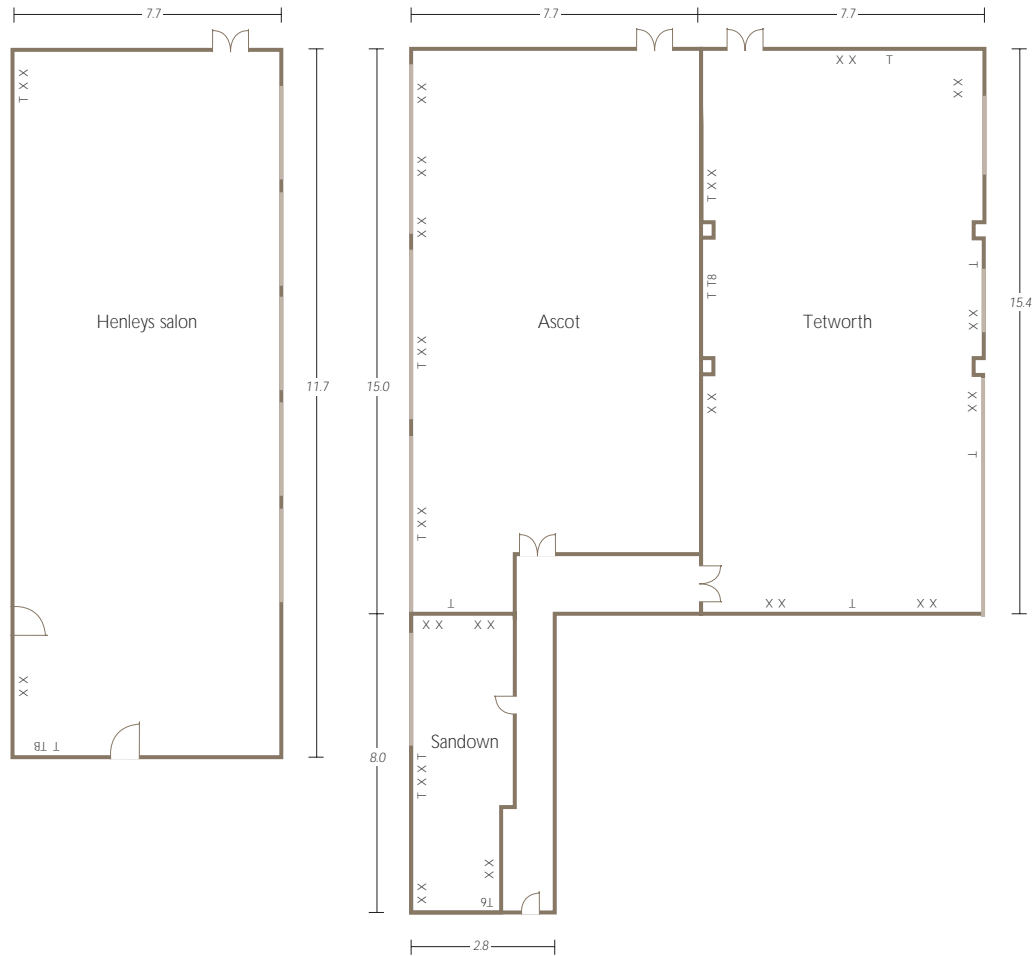
Epsom. Austen. Kipling. Dickens. Ground Floor



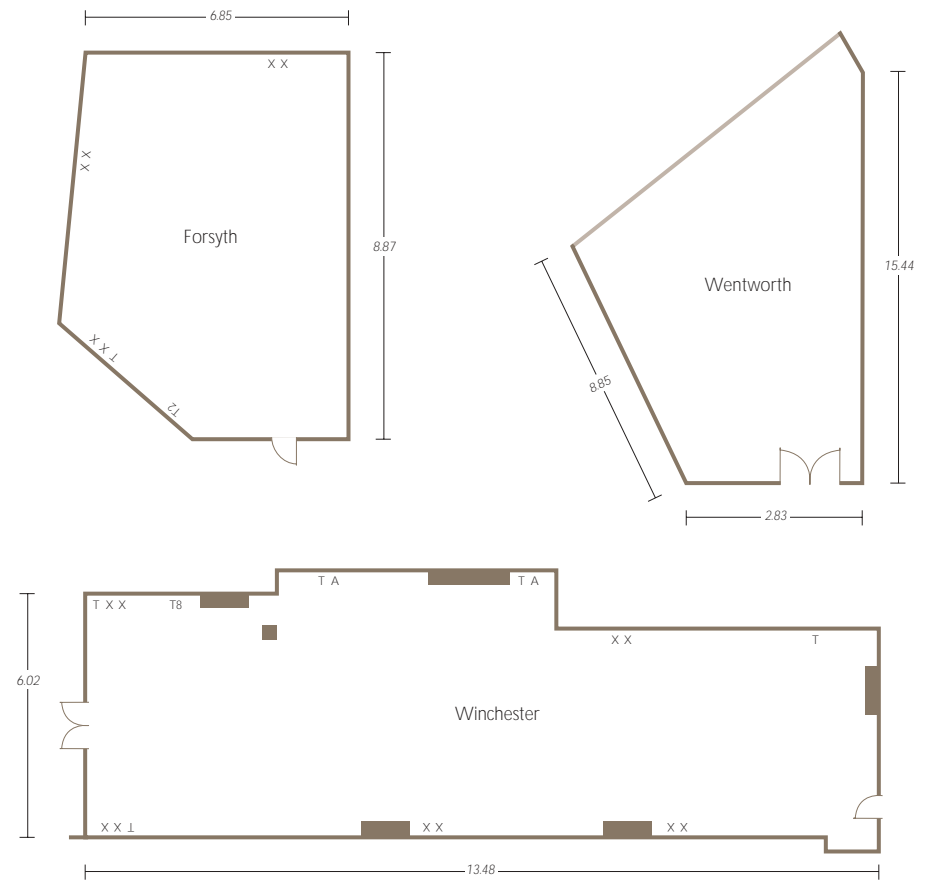
Aintree. Kempton. Harlington. Cheltenham. Ground Floor

- Key
- T = Telephone
 - X = 13 amp socket
 - A = TV aerial
 - Pillar
 - Windows
 - ▨ Screen
 - Ⓢ 3 phase - 63A

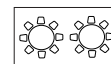
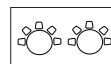
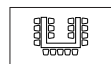
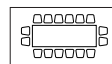
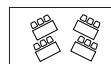
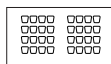
Ascot. Tetworth. Sandown. Henleys salon. Ground Floor



Forsyth. Wentworth. Winchester. Fourth Floor



Guideline capacities



Function suites & rooms	Theatre	Classroom	Boardroom	U-shape	Cabaret	Reception	Lunch/dinner	Dinner dance
Commonwealth	700	320	–	–	320	700	550	500
Commonwealth East	300	130	–	–	130	400	200	250
Commonwealth West	300	130	–	–	130	300	250	200
County	500	220	–	–	200	500	400	350
Suffolk	100	50	32	28	48	100	60	–
Norfolk	120	72	36	34	80	100	100	–
Sussex	70	40	32	28	40	100	50	–
Surrey	90	65	36	32	48	100	60	–
Royal	300	100	–	–	120	450	250	200
Edward	50	32	24	20	40	60	50	–
Elizabeth	50	32	24	20	40	60	50	–
George	50	32	24	20	40	60	50	–
Victoria	50	32	24	20	40	60	50	–
Newbury 1	150	72	40	40	100	500	250	200
Newbury 2	300	150	70	60	120	300	250	200
Forsyth	30	18	20	14	26	30	20	–
Wentworth	36	26	20	16	16	20	20	–
Winchester	50	30	25	30	25	50	30	–
Connaught/Belvedere	100	60	42	40	80	150	120	100
Connaught	60	30	25	30	30	60	30	–
Belvedere	60	30	25	30	30	60	30	–
Edwardian	100	50	45	35	70	125	100	80
Windsor	50	25	25	18	25	40	30	–
Richmond	50	25	25	18	25	40	30	–
Richmond 1	15	10	10	8	–	15	12	–
Richmond 2	25	16	16	14	16	30	15	–
Buckingham	20	12	12	–	–	–	10	–
Hampstead	–	6	6	–	–	–	–	–
Shakespeare	–	8	8	–	–	–	–	–
Wordsworth	–	–	4	–	–	–	–	–
Ascot	100	70	45	35	70	125	–	–
Tetworth	100	70	45	35	70	125	–	–
Sandown	–	–	4	–	–	–	–	–
Henleys Salon	40	25	20	30	25	45	30	–
Kipling	–	–	4	–	–	–	–	–
Dickens	–	–	4	–	–	–	–	–
Austen	–	–	4	–	–	–	–	–
Epsom	–	–	6	–	–	–	–	–
Harlington	–	–	6	–	–	–	–	–
Cheltenham	–	–	6	–	–	–	–	–
Aintree	20	–	14	–	–	–	–	–
Kempton	16	–	12	–	–	–	–	–

Dimensions & access

Details and measurements	Length m	Width m	Ceiling height m	Area square m	No. 13amp sockets	Phone points	Delegate access	Access door size h x w m	Air Con.	Natural daylight
Commonwealth	37.5	14.0	4.4	525	21	16	Stairs/lift	2.0 x 2.0	✓	✓
Commonwealth East	21.0	14.0	4.4	294	13	8	Stairs/lift	2.0 x 2.0	✓	✓
Commonwealth West	16.7	14.0	4.4	234	8	8	Stairs/lift	2.0 x 2.0	✓	✓
County	18.7	23.8	3.6	446	27	36	Lobby	1.5 x 1.92	✓	–
Suffolk	10.2	10.8	3.6	110	7	12	Lobby	1.5 x 1.92	✓	–
Norfolk	13.5	10.8	3.6	146	6	12	Lobby	1.5 x 1.92	✓	–
Sussex	10.2	7.9	3.6	81	7	12	Lobby	1.5 x 1.92	✓	–
Surrey	13.5	7.9	3.6	108	5	12	Lobby	1.5 x 1.92	✓	–
Royal	19.6	13.4	3.3	290	26	52	Stairs/lift	1.5 x 1.92	✓	–
Edward	10.6	6.0	3.3	66	7	13	Stairs/lift	1.5 x 1.92	✓	–
Elizabeth	9.0	6.0	3.3	54	5	13	Stairs/lift	1.5 x 1.92	✓	–
George	9.0	8.8	3.3	72	7	13	Stairs/lift	1.5 x 1.92	✓	–
Victoria	10.6	8.8	3.3	88	7	13	Stairs/lift	1.5 x 1.92	✓	–
Newbury 1	17.0	13.0	10.0	286	10	6	Lobby/Stairs	1.5 x 1.92	✓	✓
Newbury 2	20.0	10.0	3.3	200	20	10	Lobby/Stairs	1.5 x 1.92	✓	✓
Forsyth	8.8	6.8	2.9	59.8	3	3	Stairs/lift	1.0 x 1.92	✓	–
Wentworth	11.5	4.5	2.9	51.7	5	7	Stairs/lift	1.0 x 1.92	✓	✓
Winchester	13.4	6.0	2.3	80.4	5	13	Stairs/lift	1.5 x 1.92	✓	–
Connaught/Belvedere	13.6	7.5	2.6	160.2	14	16	Stairs/lift	1.5 x 1.92	✓	✓
Connaught	11.7	6.1	2.6	87.7	7	7	Stairs/lift	1.5 x 1.92	✓	✓
Belvedere	11.7	5.0	2.6	71.3	7	9	Stairs/lift	1.5 x 1.92	✓	✓
Edwardian	11.9	9.3	4.4	110.7	6	5	Stairs/lift	1.5 x 1.92	✓	✓
Windsor	10.9	4.6	2.9	51.0	4	10	Stairs/lift	1.5 x 1.92	✓	–
Richmond	11.1	6.1	2.9	67.7	6	8	Stairs/lift	1.5 x 1.92	✓	–
Richmond 1	5.7	6.1	2.9	34.7	3	1	Stairs/lift	1.5 x 1.92	✓	–
Richmond 2	5.4	6.1	2.9	32.9	3	7	Stairs/lift	1.5 x 1.92	✓	–
Buckingham	6.4	4.7	2.9	30.3	3	7	Stairs/lift	1.5 x 1.92	✓	–
Hampstead	6.5	3.0	2.3	19.5	4	4	Stairs/lift	1.0 x 1.92	✓	✓
Shakespeare	4.5	5.0	2.9	20.0	3	7	Stairs/lift	1.0 x 1.92	✓	✓
Wordsworth	4.2	2.9	2.9	12.1	4	1	Stairs/lift	1.0 x 1.92	✓	✓
Ascot	15.0	7.7	2.4	118.5	8	9	Lobby	1.5 x 1.92	✓	✓
Tetworth	15.4	7.7	2.4	120.8	8	9	Lobby	1.5 x 1.92	✓	✓
Sandown	8.0	2.8	2.4	22.4	5	6	Lobby	1.0 x 1.92	✓	✓
Henleys Salon	11.7	4.5	3.4	45.2	2	9	Lobby	1.0 x 1.92	✓	✓
Kipling	4.8	3.4	2.5	15.8	4	5	Lobby	1.0 x 1.92	✓	–
Dickens	4.2	3.3	2.5	13.76	2	6	Lobby	1.0 x 1.92	✓	–
Austen	4.5	3.8	2.5	17.1	2	4	Lobby	1.0 x 1.92	✓	–
Epsom	4.7	4.5	2.2	21.15	4	6	Lobby	1.0 x 1.92	✓	–
Harlington	4.2	4.1	2.2	17.2	4	6	Lobby	1.0 x 1.92	✓	–
Cheltenham	4.7	3.6	2.2	16.9	2	6	Lobby	1.0 x 1.92	✓	–
Aintree	7.2	4.8	2.2	35.04	2	6	Lobby	1.5 x 1.92	✓	–
Kempton	6.3	4.8	2.2	30.24	2	6	Lobby	1.0 x 1.92	✓	–



For information and bookings call:

London

T +44 (0)20 7845 8680

F +44 (0)20 7845 8681

E londonmeetings@radisson.com

Manchester

T +44 (0)161 835 9929

F +44 (0)161 835 9979

E rehmanchestermeetings@radisson.com

Heathrow

T +44 (0)20 8757 7903

F +44 (0)20 8757 7904

E htrwcb@radisson.com

or visit www.radissonedwardian.com