



Meetings and Events

at Radisson Edwardian Heathrow Hotel and Convention Centre

Radisson
EDWARDIAN
HEATHROW

When size matters

Welcome to a place where dramatic spaces, distinctive design and dedicated service come together in a location that's perfect for local, national and international events.

A stylish conferencing venue for up to 700 people that's all about choice. 65 versatile spaces come with dedicated service and food that's fresh, flexible and beautifully balanced.

459 bedrooms, two restaurants and bars, a health spa and parking for 650 cars all add up to a venue that's utterly unique – with a team whose ideas will ensure your event is too.

Our experience creates
a better experience



Private Room 30



Thought for food

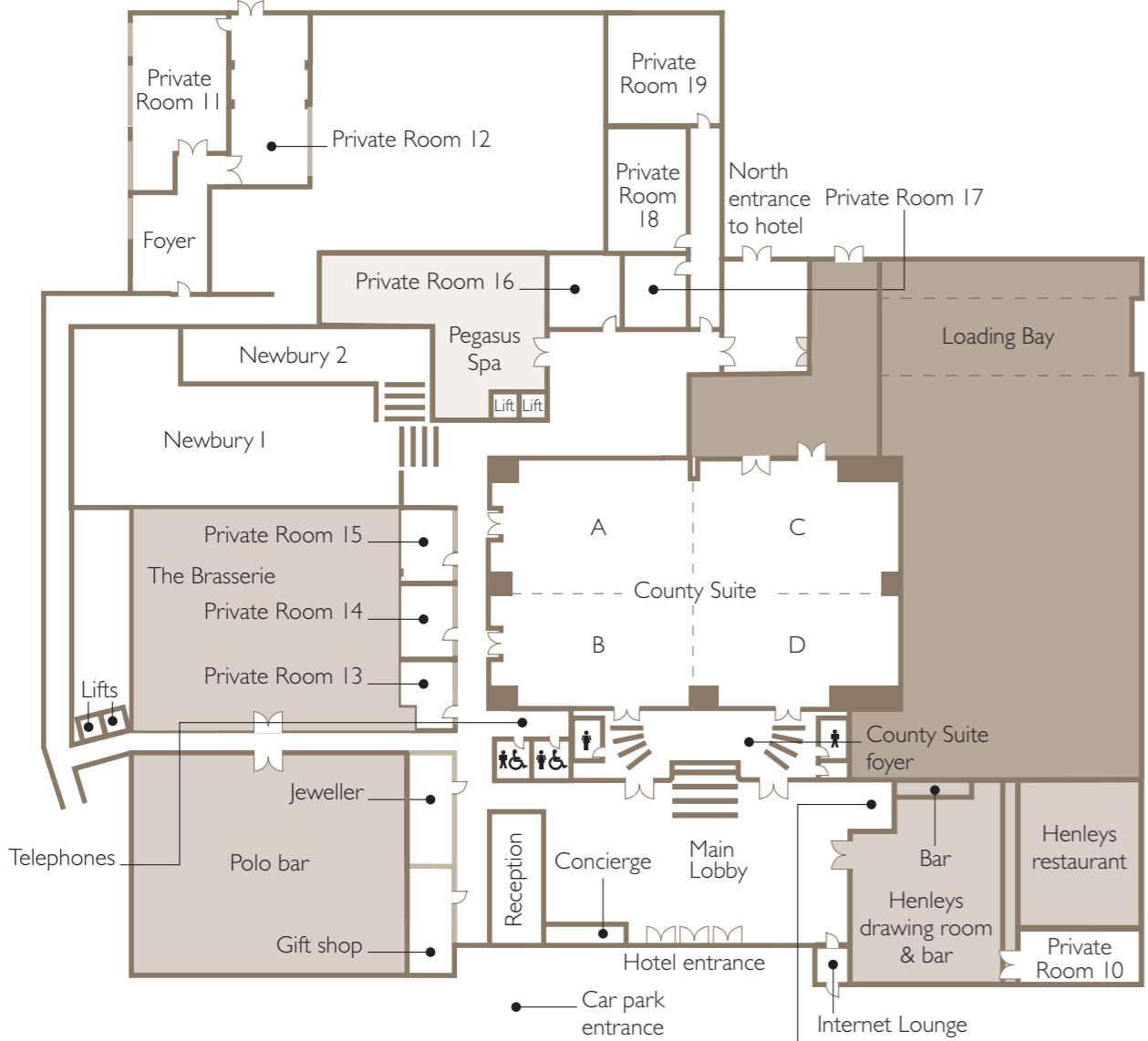
There's truth in the old adage that you are what you eat, so it's reassuring to know that considerable thought has gone into preparing it.

A mid-morning energy boost, lunch to linger over and a well timed afternoon pick-me-up – it's all freshly prepared and nutritionally balanced to help you stay sharp throughout the day, because the food you eat fuels your success.

Opt for a bespoke menu tailored to your needs, or select from three mouth-watering menu options designed for meetings and events of every size and style.

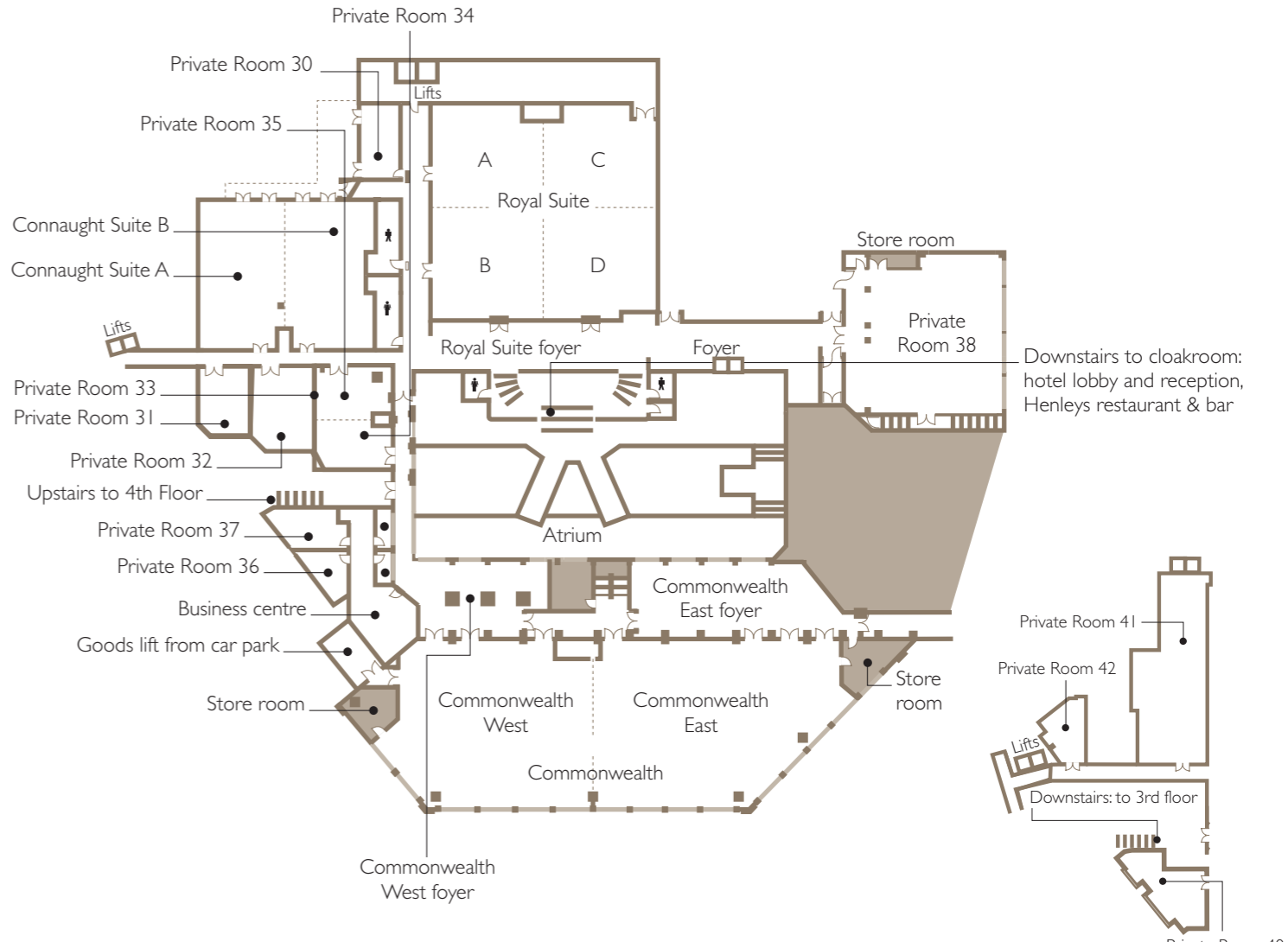


Ground floor

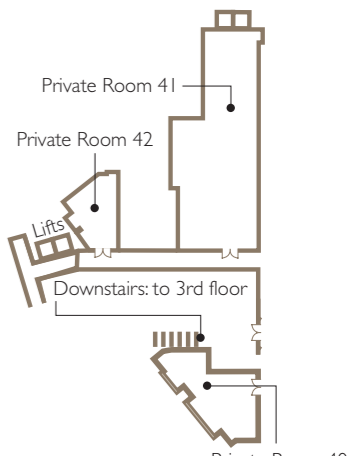


■ bars & restaurants ■ beauty & fitness

Third floor



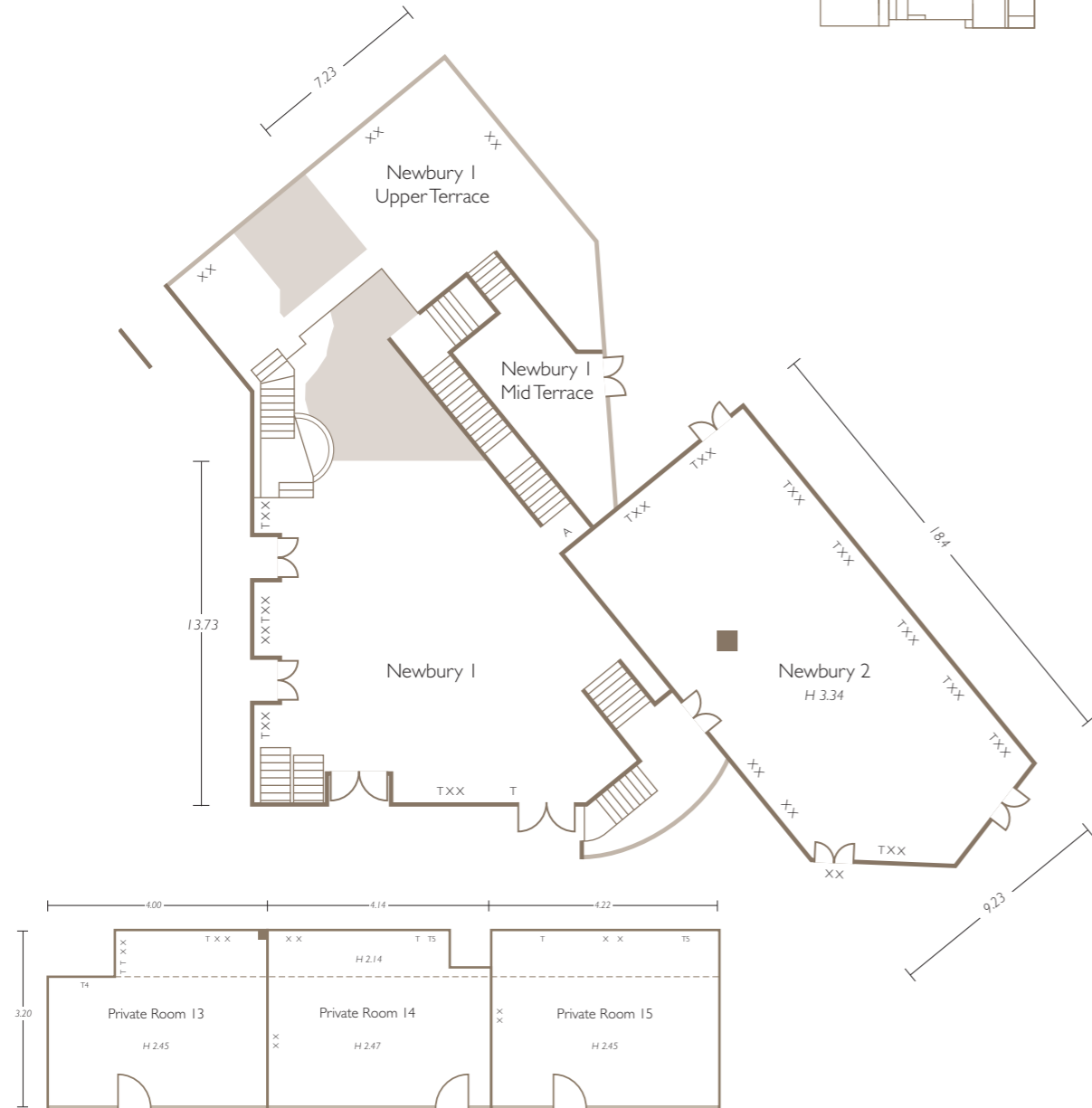
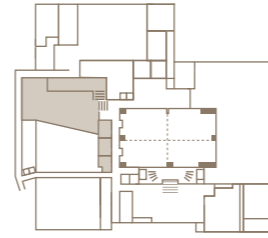
Fourth floor



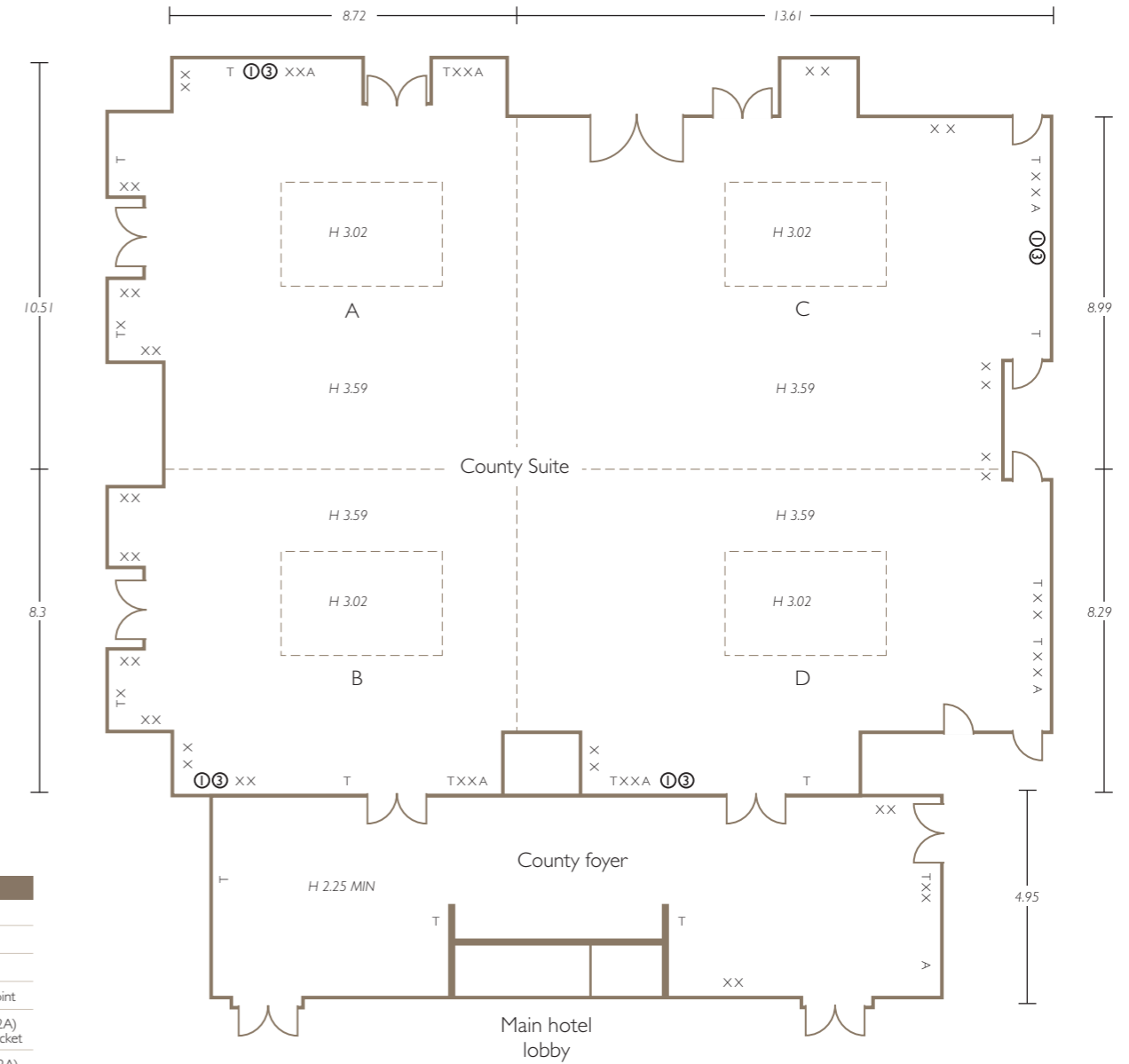
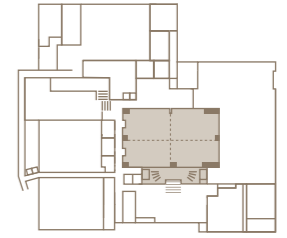


The Atrium

Ground floor
Newbury Suite
Private Rooms 13–15



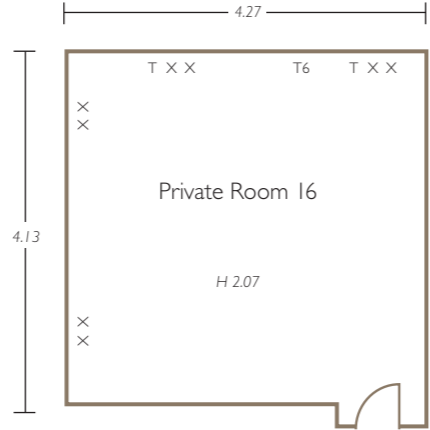
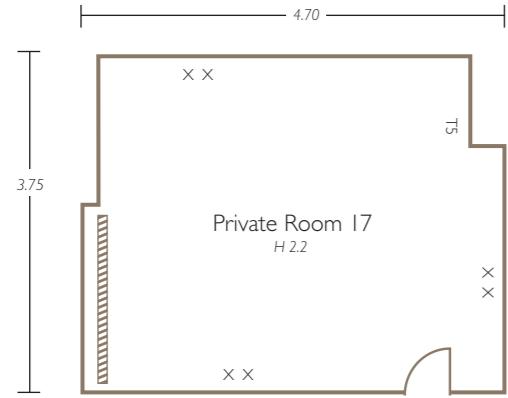
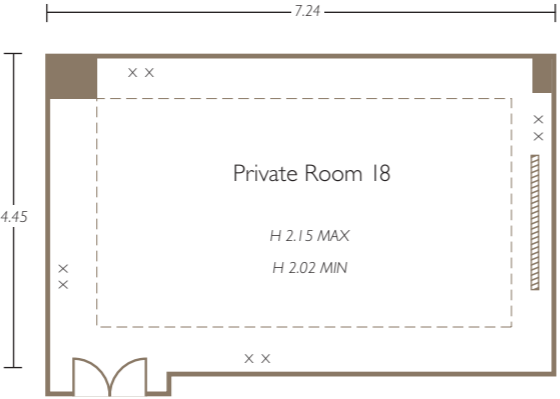
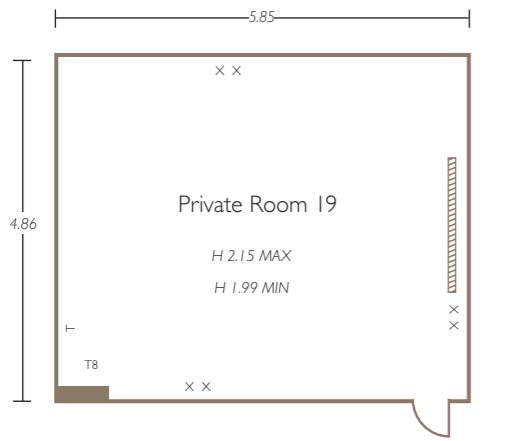
Ground floor
County Suite



| Key | |
|-----|------------------------------------|
| T | Telephone |
| X | 13 amp socket |
| A | TV aerial |
| T5 | Data Access Point |
| Ⓛ | Single Phase (32A) Commando Socket |
| Ⓜ | Three Phase (32A) Commando Socket |

Ground floor

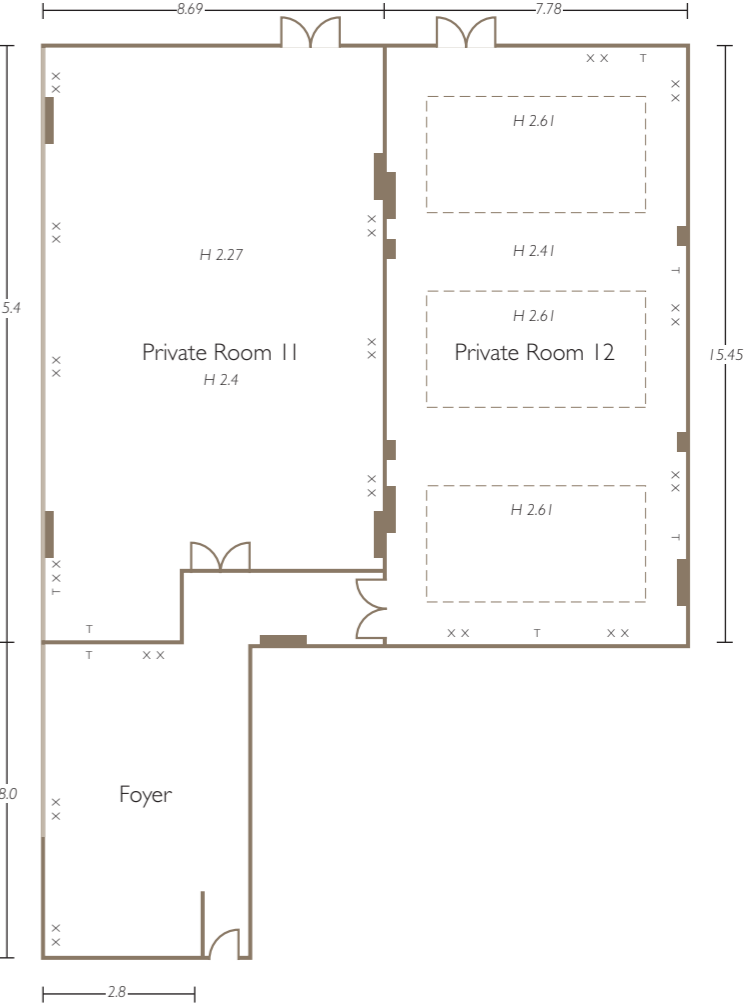
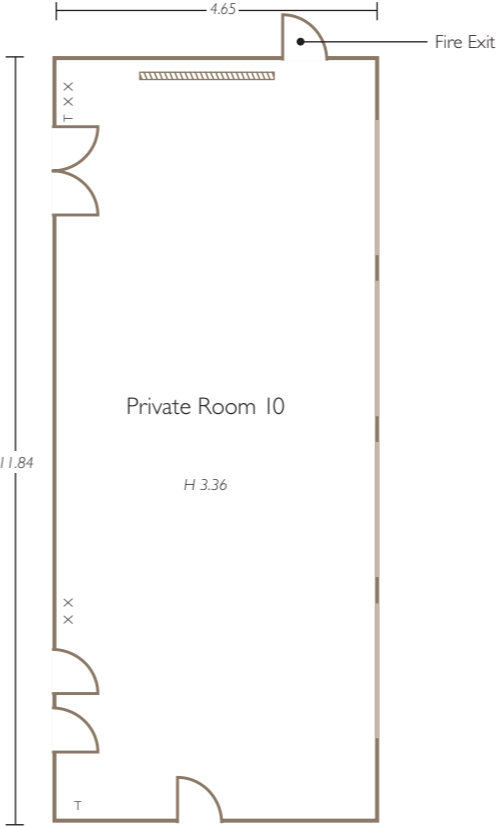
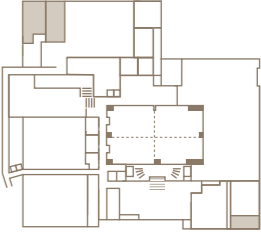
Private Rooms 16–19



| Key | |
|-----|-------------------|
| T | Telephone |
| X | 13 amp socket |
| A | TV aerial |
| T5 | Data Access Point |

Ground floor

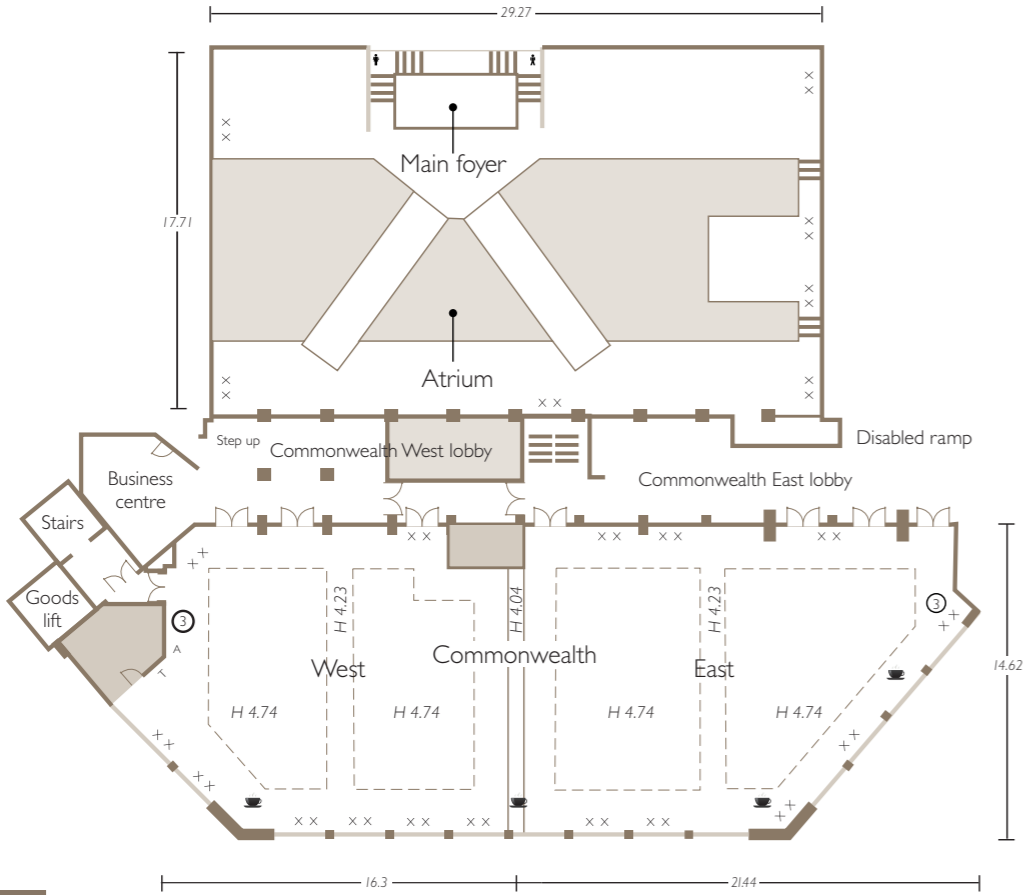
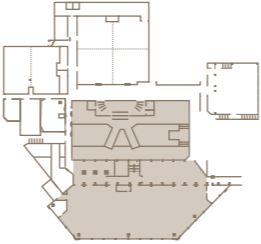
Private Rooms 10–12





Third floor

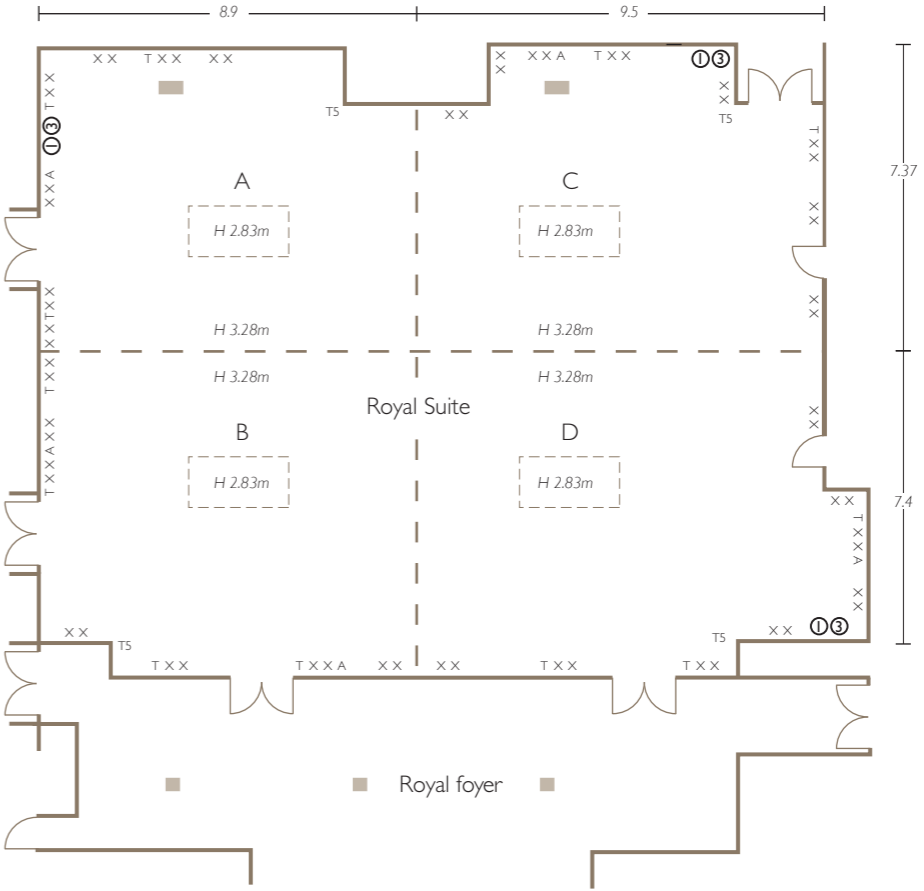
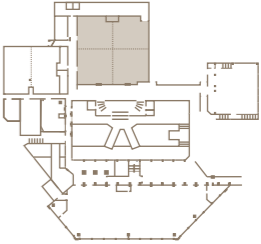
Commonwealth Suite & Atrium



| Key | |
|-----|------------------------------------|
| T | Telephone |
| X | 13 amp socket |
| A | TV aerial |
| T5 | Data Access Point |
| ⓐ | Three Phase (125A) Commando Socket |

Third floor

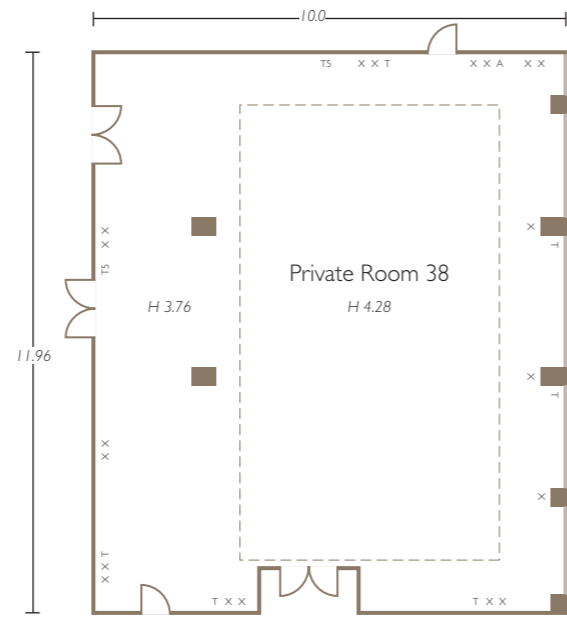
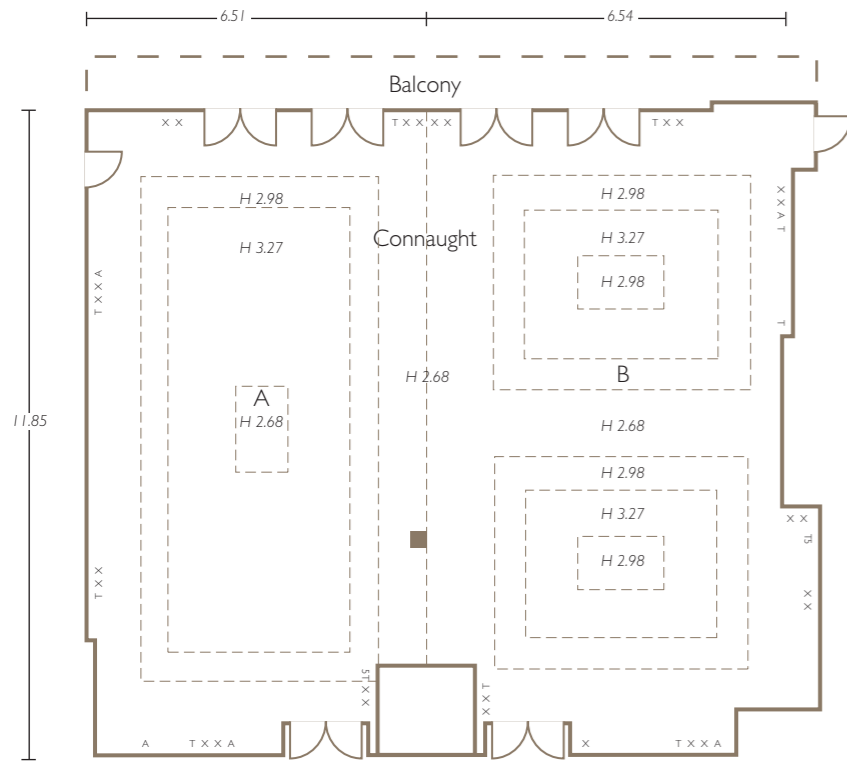
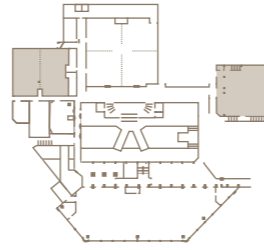
Royal Suite (A – D)



| Key | |
|-----|------------------------------------|
| T | Telephone |
| X | 13 amp socket |
| A | TV aerial |
| T5 | Data Access Point |
| ⓐ | Single Phase (32A) Commando Socket |
| ⓑ | Three Phase (32A) Commando Socket |

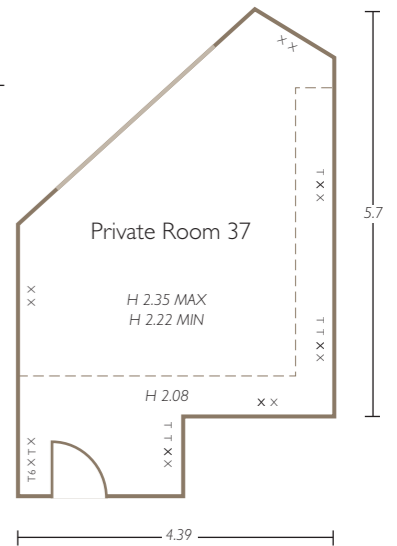
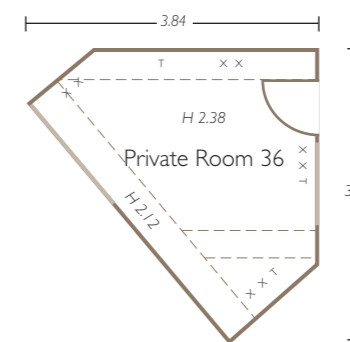
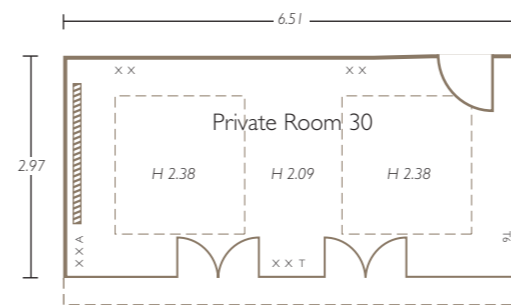
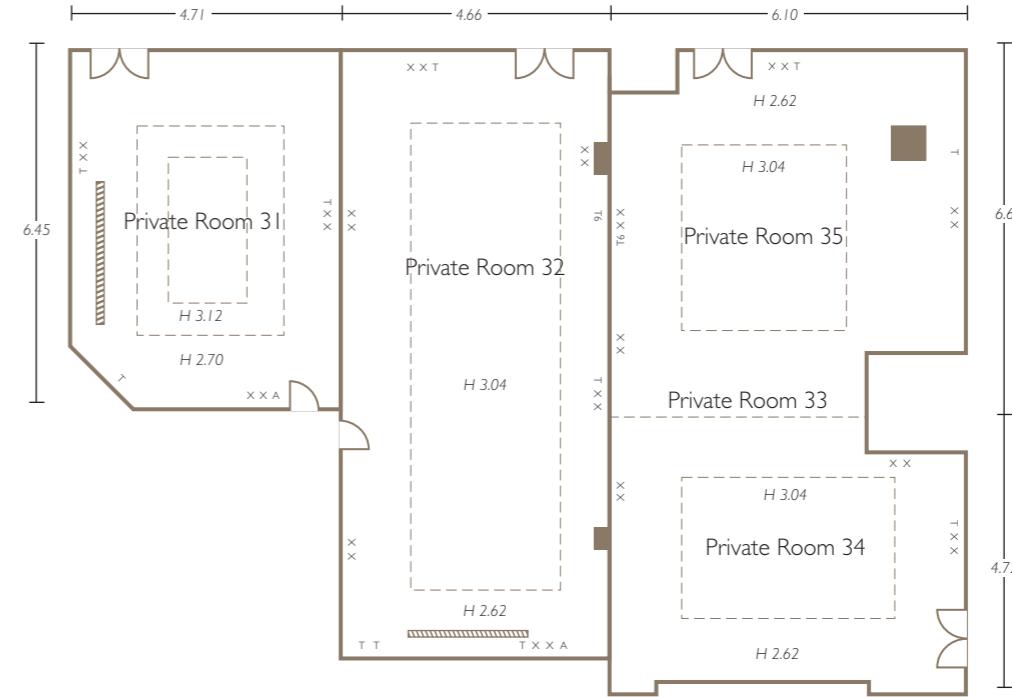
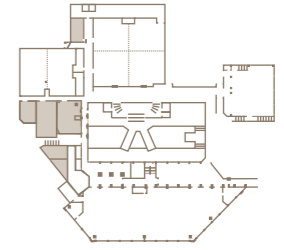
Third floor

Connaught Suite (A & B)
Private Room 38



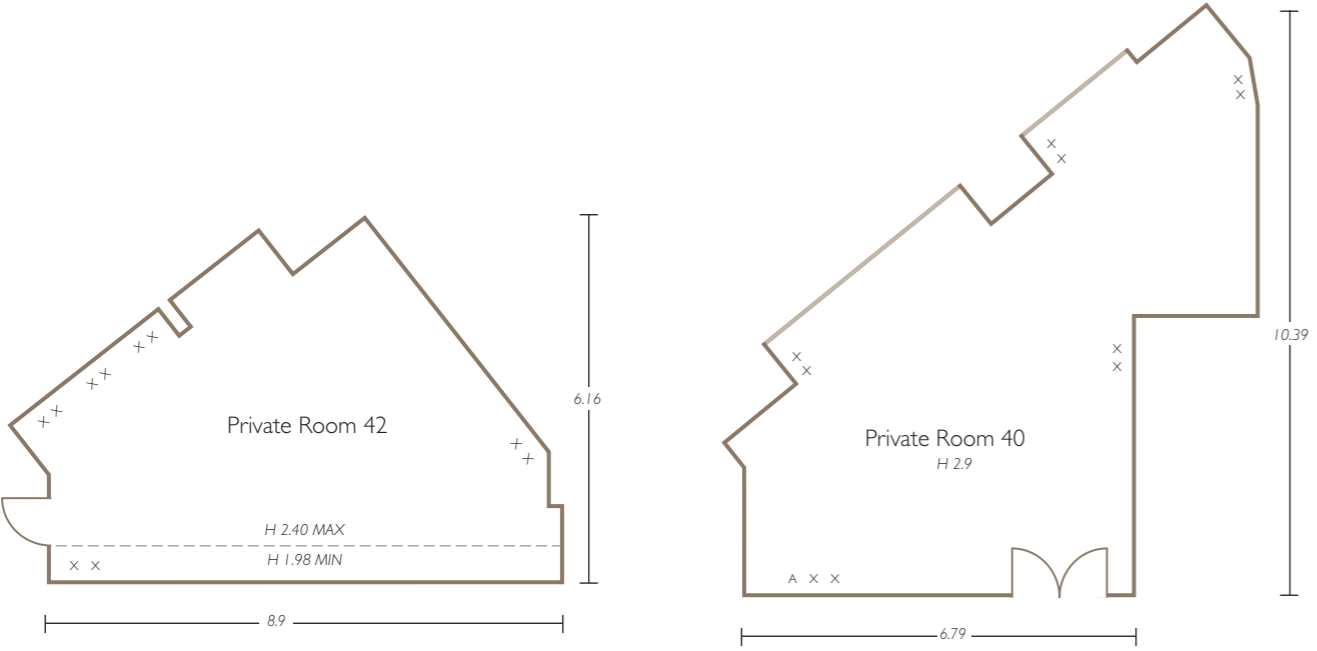
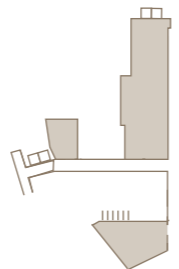
Third floor

Private Rooms 30–37



| Key | |
|-----|-------------------|
| T | Telephone |
| X | 13 amp socket |
| A | TV aerial |
| T5 | Data Access Point |

Fourth floor
Private Rooms 40–42



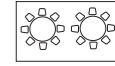
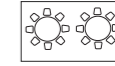
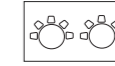
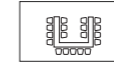
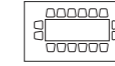
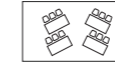
| Key | |
|-----|-------------------|
| T | Telephone |
| X | 13 amp socket |
| A | TV aerial |
| T5 | Data Access Point |



Dimensions & access

| Name of room | Height in m. | Area in m ² | Length | Width | Day-light | Fully air-cond | Phone points | 3amp Sockets | Guest Lift access/Disabled access |
|--------------------|--------------|------------------------|--------|-------|-----------|----------------|--------------|--------------|-----------------------------------|
| Commonwealth Suite | 4.4 | 502 | 37.74 | 14.65 | y | y | 7 | 38 | y |
| Commonwealth East | 4.4 | 272 | 21.44 | 14.65 | y | y | 5 | 20 | y |
| Commonwealth West | 4.4 | 230 | 16.3 | 14.65 | y | y | 2 | 18 | y |
| County | 3.6 | 400 | 18.81 | 22.32 | n | y | 13 | 46 | y |
| County A | 3.6 | 95 | 10.51 | 8.72 | n | y | 4 | 13 | y |
| County B | 3.6 | 77 | 8.3 | 8.72 | n | y | 3 | 15 | y |
| County C | 3.6 | 125 | 10.51 | 13.61 | n | y | 2 | 10 | y |
| County D | 3.6 | 103 | 8.3 | 13.61 | n | y | 4 | 8 | y |
| Royal | 3.3 | 207 | 18.39 | 14.77 | n | y | 12 | 60 | y |
| Royal A | 3.3 | 64 | 7.37 | 8.9 | n | y | 3 | 14 | y |
| Royal B | 3.3 | 64 | 7.4 | 8.9 | n | y | 4 | 14 | y |
| Royal C | 3.3 | 68 | 7.37 | 9.49 | n | y | 2 | 16 | y |
| Royal D | 3.3 | 75 | 7.4 | 9.49 | n | y | 3 | 16 | y |
| Newbury I | 10 | 288 | 13.7 | 13 | y | y | 6 | 22 | n |
| Newbury II | 3.3 | 170 | 9.23 | 18.4 | y | y | 8 | 20 | n |
| Connaught | 2.6 | 80 | 13.05 | 11.85 | y | y | 10 | 26 | y |
| Connaught A | 2.6 | 75 | 6.51 | 11.85 | y | y | 5 | 14 | y |
| Connaught B | 2.6 | 80 | 6.54 | 11.85 | y | y | 5 | 12 | y |
| Private Room 10 | 3.4 | 55 | 11.84 | 4.65 | y | y | 2 | 4 | y |
| Private Room 11 | 2.4 | 126 | 15.4 | 8.69 | y | y | 2 | 14 | y |
| Private Room 12 | 2.4 | 120 | 15.45 | 7.78 | y | y | 4 | 12 | y |
| Private Room 13 | 3.4 | 12 | 4 | 3.2 | n | y | 3 | 4 | y |
| Private Room 14 | 3.3 | 13 | 4 | 3.2 | n | y | 1 | 4 | y |
| Private Room 15 | 2.5 | 14 | 4 | 3.2 | n | y | 1 | 4 | y |
| Private Room 16 | 2.2 | 18 | 4.13 | 4.27 | n | y | 1 | 8 | y |
| Private Room 17 | 2.2 | 18 | 4.7 | 3.75 | n | y | 1 | 6 | y |
| Private Room 18 | 2.2 | 29 | 7.24 | 4.45 | n | y | 1 | 6 | y |
| Private Room 19 | 2.2 | 28 | 5.85 | 4.68 | n | y | 1 | 6 | y |
| Private Room 30 | 2.3 | 20 | 6.51 | 2.97 | y | y | 1 | 8 | y |
| Private Room 31 | 2.9 | 28 | 6.32 | 4.79 | n | y | 3 | 6 | y |
| Private Room 32 | 2.9 | 66 | 11.32 | 6.09 | n | y | 4 | 10 | y |
| Private Room 33 | 2.9 | 53 | 11.32 | 4.74 | n | y | 3 | 14 | y |
| Private Room 34 | 2.9 | 28 | 6.09 | 4.72 | n | y | 1 | 6 | y |
| Private Room 35 | 2.9 | 38 | 6.09 | 6.6 | n | y | 2 | 8 | y |
| Private Room 36 | 2.9 | 10 | 3.9 | 3.84 | y | y | 2 | 8 | y |
| Private Room 37 | 2.9 | 20 | 4.39 | 5.7 | y | y | 4 | 12 | y |
| Private Room 38 | 4.4 | 120 | 11.96 | 10 | y | y | 6 | 18 | y |
| Private Room 40 | 2.9 | 58 | 6.79 | 10.39 | y | y | 1 | 10 | y |
| Private Room 41 | 2.3 | 90 | 16.77 | 5.9 | n | y | 4 | 11 | y |
| Private Room 42 | 2.9 | 42 | 8.9 | 6.16 | n | y | 1 | 10 | y |

Guideline capacities



| Name of room | Theatre | Classroom | Boardroom | Ushape | Cabaret | Reception | Dinner/Lunch |
|--------------------|---------|-----------|-----------|--------|---------|-----------|--------------|
| Commonwealth Suite | 700 | 350 | - | - | 400 | 700 | 550 |
| Commonwealth East | 400 | 130 | - | - | 180 | 400 | 250 |
| Commonwealth West | 300 | 130 | - | - | 150 | 300 | 250 |
| County | 500 | 230 | - | - | 230 | 500 | 350 |
| County A | 100 | 50 | 32 | 20 | 50 | 100 | 60 |
| County B | 70 | 40 | 32 | 28 | 40 | 100 | 50 |
| County C | 120 | 72 | 36 | 34 | 80 | 100 | 100 |
| County D | 90 | 65 | 36 | 32 | 50 | 100 | 60 |
| Royal | 300 | 100 | - | - | 120 | 450 | 250 |
| Royal A | 50 | 32 | 24 | 20 | 40 | 60 | 50 |
| Royal B | 50 | 32 | 24 | 20 | 40 | 60 | 50 |
| Royal C | 50 | 32 | 24 | 20 | 40 | 60 | 50 |
| Royal D | 50 | 32 | 24 | 20 | 40 | 60 | 50 |
| Newbury I | - | - | - | - | - | 500 | 250 |
| Newbury II | 150 | 80 | 70 | 60 | 120 | 300 | 150 |
| Connaught | 150 | 60 | 42 | 42 | 80 | 150 | 120 |
| Connaught A | 60 | 30 | 25 | 30 | 35 | 60 | 30 |
| Connaught B | 60 | 30 | 25 | 30 | 35 | 60 | 30 |
| Private Room 10 | 50 | 25 | 25 | 30 | 25 | 45 | 30 |
| Private Room 11 | 100 | 70 | 40 | 35 | 70 | 125 | 100 |
| Private Room 12 | 100 | 70 | 40 | 35 | 70 | 125 | 100 |
| Private Room 13 | - | - | 4 | - | - | - | - |
| Private Room 14 | - | - | 4 | - | - | - | - |
| Private Room 15 | - | - | 4 | - | - | - | - |
| Private Room 16 | - | - | 6 | - | - | - | - |
| Private Room 17 | - | - | 6 | - | - | - | - |
| Private Room 18 | - | - | 14 | - | - | - | - |
| Private Room 19 | - | - | 12 | - | - | - | - |
| Private Room 30 | - | - | 6 | - | - | - | - |
| Private Room 31 | - | - | 12 | - | - | - | 10 |
| Private Room 32 | 50 | 25 | 25 | 18 | 24 | 40 | 30 |
| Private Room 33 | 50 | 25 | 25 | 25 | 24 | 40 | 30 |
| Private Room 34 | 15 | 10 | 10 | 8 | - | - | 12 |
| Private Room 35 | 15 | 10 | 10 | 8 | - | - | 12 |
| Private Room 36 | - | - | 4 | - | - | - | - |
| Private Room 37 | - | - | 8 | - | - | - | - |
| Private Room 38 | 100 | 50 | 45 | 35 | 70 | 125 | 100 |
| Private Room 40 | 36 | 26 | 20 | 16 | 16 | 20 | 20 |
| Private Room 41 | 50 | 30 | 25 | 20 | 25 | 50 | 30 |
| Private Room 42 | 30 | 18 | 20 | 14 | 20 | 30 | 20 |

The Details

Accommodation

459 bedrooms:

17 Suites; 149 Kings; 178 Doubles; 115 Twins; 4 lifts accessing all floors

All rooms benefit from:

Air conditioning, express check out, in-room safe, in-room bar, modem connection, personal phone number with voice mail, satellite and pay movies, trouser press, iron and ironing board, hairdryer, stationery, complimentary magazines

Hotel services:

- Pegasus health spa
- Business centre service
- Complimentary wi-fi
- Dedicated AV supplier
- Newsagent, jewellers
- Disabled toilets
- 24 hour Concierge
- Valet service available for laundry
- Complimentary Internet Lounge
- Complimentary Shoe Shine

Dining:

Henleys Drawing Room & Restaurant

The Brasserie Bar/Restaurant

Polo Lounge

24 hour room service

Conference and private dining:

Maximum capacity: 700

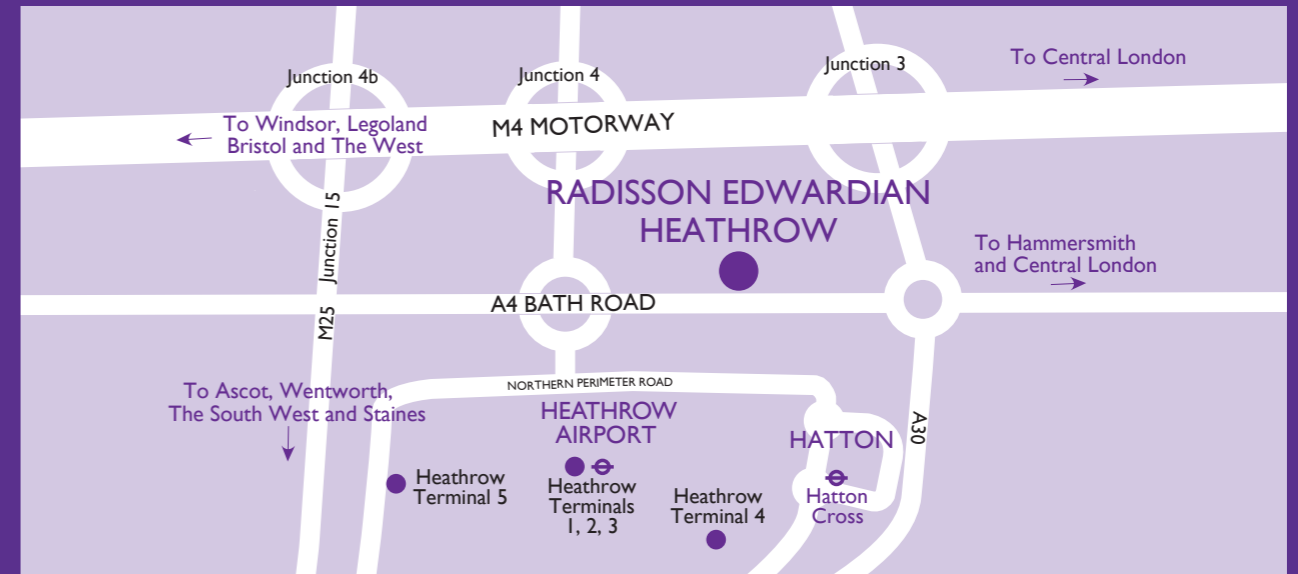
Hotel car park:

Over 650 spaces available

Virtual tours:

Visit radissonedwardian.com/heathrow

The Location



By road:

From Junction 4 off of the M4, follow signs to Terminals 1, 2 & 3. At roundabout take A4 exit onto Bath Road. Continue for about 1/2 km, the hotel entrance is 2nd on the left.

From central London to Heathrow Airport:

Piccadilly Line 40-45 mins from central London to Terminals 1, 2 & 3.

By Heathrow Express:

From Paddington Station to Terminals 1, 2 & 3 Every 15 mins 05.02 - 23.47 daily.

From Heathrow airport to hotel:

- From Terminals 1, 2 & 3 – 5 mins by taxi
- From Terminal 4 – 10 mins by taxi
- From Terminal 5 – 12 mins by taxi
- Use the Heathrow Hotel Hoppa Bus (H3 and H53) running frequently between the airport and the hotel from 05.10 – 23.52 daily

Radisson Edwardian Heathrow ★★★★★ 140 Bath Road, Hayes, Middlesex UB3 5AW
Meetings & Events t: +44 (0)20 8757 7903 f: +44 (0)20 8757 7904 e: htrwcb@radisson.com
radissonedwardian.com/heathrow